

PRSS23 Antibody (Center)

Purified Rabbit Polyclonal Antibody (Pab)

Catalog # AP21678c

Product Information

Application	WB, E
Primary Accession	O95084
Reactivity	Human
Host	Rabbit
Clonality	polyclonal
Isotype	Rabbit IgG
Clone Names	RB53120
Calculated MW	43001

Additional Information

Gene ID	11098
Other Names	Serine protease 23, 3421-, Putative secreted protein Zsig13, PRSS23, ZSIG13
Target/Specificity	This PRSS23 antibody is generated from a rabbit immunized with a KLH conjugated synthetic peptide between 156-191 amino acids from the Central region of human PRSS23.
Dilution	WB~~1:500 E~~Use at an assay dependent concentration.
Format	Purified polyclonal antibody supplied in PBS with 0.09% (W/V) sodium azide. This antibody is purified through a protein A column, followed by peptide affinity purification.
Storage	Maintain refrigerated at 2-8°C for up to 2 weeks. For long term storage store at -20°C in small aliquots to prevent freeze-thaw cycles.
Precautions	PRSS23 Antibody (Center) is for research use only and not for use in diagnostic or therapeutic procedures.

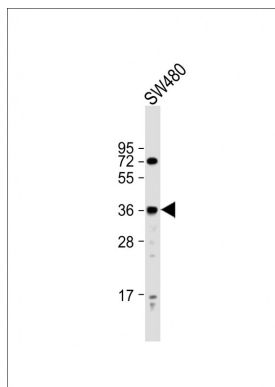
Protein Information

Name	PRSS23
Synonyms	ZSIG13
Cellular Location	Secreted.

References

Li X.,et al.Submitted (JUL-1997) to the EMBL/GenBank/DDBJ databases.
Sheppard P.,et al.Submitted (OCT-1999) to the EMBL/GenBank/DDBJ databases.
Wiemann S.,et al.Genome Res. 11:422-435(2001).
Clark H.F.,et al.Genome Res. 13:2265-2270(2003).
Ebert L.,et al.Submitted (JUN-2004) to the EMBL/GenBank/DDBJ databases.

Images



Anti-PRSS23 Antibody (Center) at 1:2000 dilution + SW480 whole cell lysate Lysates/proteins at 20 µg per lane. Secondary Goat Anti-Rabbit IgG, (H+L), Peroxidase conjugated at 1/10000 dilution. Predicted band size : 43 kDa Blocking/Dilution buffer: 5% NFDM/TBST.

Please note: All products are 'FOR RESEARCH USE ONLY. NOT FOR USE IN DIAGNOSTIC OR THERAPEUTIC PROCEDURES'.