

SLC24A4 Antibody (Center)

Purified Rabbit Polyclonal Antibody (Pab)

Catalog # AP21680c

Product Information

Application	WB, E
Primary Accession	Q8NFF2
Reactivity	Human, Rat, Mouse
Host	Rabbit
Clonality	polyclonal
Isotype	Rabbit IgG
Clone Names	RB47945
Calculated MW	69042

Additional Information

Gene ID	123041
Other Names	Sodium/potassium/calcium exchanger 4, Na(+)/K(+)/Ca(2+)-exchange protein 4, Solute carrier family 24 member 4, SLC24A4, NCKX4
Target/Specificity	This SLC24A4 antibody is generated from a rabbit immunized with a KLH conjugated synthetic peptide between 344-378 amino acids from the Central region of human SLC24A4.
Dilution	WB~~1:2000 E~~Use at an assay dependent concentration.
Format	Purified polyclonal antibody supplied in PBS with 0.09% (W/V) sodium azide. This antibody is purified through a protein A column, followed by peptide affinity purification.
Storage	Maintain refrigerated at 2-8°C for up to 2 weeks. For long term storage store at -20°C in small aliquots to prevent freeze-thaw cycles.
Precautions	SLC24A4 Antibody (Center) is for research use only and not for use in diagnostic or therapeutic procedures.

Protein Information

Name	SLC24A4 (HGNC:10978)
Function	Calcium, potassium:sodium antiporter that transports 1 Ca(2+) and 1 K(+) in exchange for 4 Na(+) (PubMed: 12379639 , PubMed: 26631410). Controls the rapid response termination and proper regulation of adaptation in olfactory sensory neurons (OSNs) which subsequently influences how odor information is encoded and perceived (By similarity). May play a role in calcium transport

during amelogenesis (PubMed:[23375655](#), PubMed:[24621671](#)).

Cellular Location

Cell membrane; Multi-pass membrane protein. Cytoplasm
{ECO:0000250|UniProtKB:Q8CGQ8}

Tissue Location

Expressed abundantly in all regions of the brain, aorta, lung and thymus (PubMed:12379639). Expressed at lower levels in the stomach and intestine (PubMed:12379639)

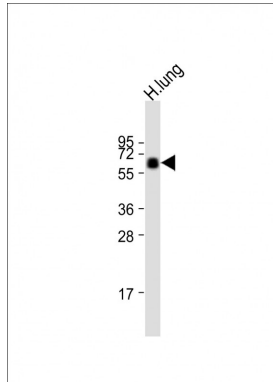
Background

Transports 1 Ca(2+) and 1 K(+) in exchange for 4 Na(+). Controls the rapid response termination and proper regulation of adaptation in olfactory sensory neurons (OSNs) which subsequently influences how odor information is encoded and perceived. May play a role in calcium transport during amelogenesis (By similarity).

References

Li X.-F.,et al.J. Biol. Chem. 277:48410-48417(2002).
Ota T.,et al.Nat. Genet. 36:40-45(2004).
Heilig R.,et al.Nature 421:601-607(2003).
Mural R.J.,et al.Submitted (JUL-2005) to the EMBL/GenBank/DDBJ databases.
Bechtel S.,et al.BMC Genomics 8:399-399(2007).

Images



Anti-SLC24A4 Antibody (Center) at 1:2000 dilution + human lung lysate Lysates/proteins at 20 µg per lane. Secondary Goat Anti-Rabbit IgG, (H+L), Peroxidase conjugated at 1/10000 dilution. Predicted band size : 69 kDa Blocking/Dilution buffer: 5% NFDM/TBST.

Please note: All products are 'FOR RESEARCH USE ONLY. NOT FOR USE IN DIAGNOSTIC OR THERAPEUTIC PROCEDURES'.