

# PM20D1 Antibody (N-Term)

Purified Rabbit Polyclonal Antibody (Pab)

Catalog # AP21685a

## Product Information

---

Application	WB, E
Primary Accession	<a href="#">Q6GTS8</a>
Reactivity	Human
Host	Rabbit
Clonality	polyclonal
Isotype	Rabbit IgG
Clone Names	RB53071
Calculated MW	55741

## Additional Information

---

Gene ID	148811
Other Names	Probable carboxypeptidase PM20D1, 3417-, Peptidase M20 domain-containing protein 1, PM20D1
Target/Specificity	This PM20D1 antibody is generated from a rabbit immunized with a KLH conjugated synthetic peptide between 125-159 amino acids from the human region of human PM20D1.
Dilution	WB~~1:2000 E~~Use at an assay dependent concentration.
Format	Purified polyclonal antibody supplied in PBS with 0.05% (V/V) Proclin 300. This antibody is purified through a protein A column, followed by peptide affinity purification.
Storage	Maintain refrigerated at 2-8°C for up to 2 weeks. For long term storage store at -20°C in small aliquots to prevent freeze-thaw cycles.
Precautions	PM20D1 Antibody (N-Term) is for research use only and not for use in diagnostic or therapeutic procedures.

## Protein Information

---

Name	PM20D1 ( <a href="#">HGNC:26518</a> )
Function	Secreted enzyme that regulates the endogenous N-fatty acyl amino acid (NAAs) tissue and circulating levels by functioning as a bidirectional NAA synthase/hydrolase (PubMed: <a href="#">27374330</a> ). It condenses free fatty acids and free amino acids to generate NAAs and bidirectionally catalyzes the reverse hydrolysis reaction (PubMed: <a href="#">27374330</a> ). Some of these NAAs stimulate

oxidative metabolism via mitochondrial uncoupling, increasing energy expenditure in a UPC1- independent manner. Thereby, this secreted protein may indirectly regulate whole body energy expenditure. PM20D1 circulates in tight association with both low- and high-density (LDL and HDL, respectively) lipoprotein particles (By similarity).

#### Cellular Location

Secreted {ECO:0000250|UniProtKB:Q8C165}.

## References

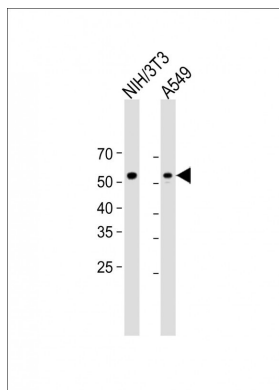
---

Ota T.,et al.Nat. Genet. 36:40-45(2004).

Gregory S.G.,et al.Nature 441:315-321(2006).

## Images

---



All lanes: Anti-PM20D1 Antibody (N-Term) at 1:1000 dilution Lane 1: NIH/3T3 whole cell lysate Lane 2: A549 whole cell lysate Lysates/proteins at 20 µg per lane. Secondary: Goat Anti-Rabbit IgG, (H+L), Peroxidase conjugated (ASP1615) at 1/15000 dilution. Observed band size: 56 KDa Blocking/Dilution buffer: 5% NFDm/TBST.

Please note: All products are 'FOR RESEARCH USE ONLY. NOT FOR USE IN DIAGNOSTIC OR THERAPEUTIC PROCEDURES'.