

# ATP2A3 Antibody (N-Term)

Purified Rabbit Polyclonal Antibody (Pab)

Catalog # AP21708a

## Product Information

---

<b>Application</b>	WB, IHC-P, E
<b>Primary Accession</b>	<a href="#">Q93084</a>
<b>Reactivity</b>	Human, Rat, Mouse
<b>Host</b>	Rabbit
<b>Clonality</b>	polyclonal
<b>Isotype</b>	Rabbit IgG
<b>Clone Names</b>	RB53548
<b>Calculated MW</b>	109256

## Additional Information

---

<b>Gene ID</b>	489
<b>Other Names</b>	Sarcoplasmic/endoplasmic reticulum calcium ATPase 3, SERCA3, SR Ca(2+)-ATPase 3, Calcium pump 3, ATP2A3
<b>Target/Specificity</b>	This ATP2A3 antibody is generated from a rabbit immunized with a KLH conjugated synthetic peptide between 13-47 amino acids from human ATP2A3.
<b>Dilution</b>	WB~~1:2000 IHC-P~~1:100~500 E~~Use at an assay dependent concentration.
<b>Format</b>	Purified polyclonal antibody supplied in PBS with 0.09% (W/V) sodium azide. This antibody is purified through a protein A column, followed by peptide affinity purification.
<b>Storage</b>	Maintain refrigerated at 2-8°C for up to 2 weeks. For long term storage store at -20°C in small aliquots to prevent freeze-thaw cycles.
<b>Precautions</b>	ATP2A3 Antibody (N-Term) is for research use only and not for use in diagnostic or therapeutic procedures.

## Protein Information

---

<b>Name</b>	ATP2A3 ( <a href="#">HGNC:813</a> )
<b>Function</b>	This magnesium-dependent enzyme catalyzes the hydrolysis of ATP coupled with the transport of calcium. Transports calcium ions from the cytosol into the sarcoplasmic/endoplasmic reticulum lumen. Contributes to calcium sequestration involved in muscular excitation/contraction.

<b>Cellular Location</b>	Nucleus membrane; Multi-pass membrane protein. Endoplasmic reticulum membrane; Multi-pass membrane protein. Sarcoplasmic reticulum membrane; Multi-pass membrane protein
<b>Tissue Location</b>	Found in most tissues. Most abundant in thymus, trachea, salivary gland, spleen, bone marrow, lymph node, peripheral leukocytes, pancreas and colon. Also detected in fetal tissues Expressed in cell lineages of hematopoietic, epithelial, or embryonic origin and also expressed in several cancer cell lines

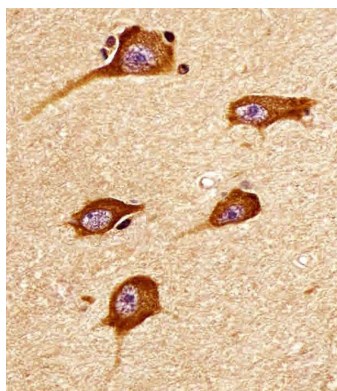
## Background

This magnesium-dependent enzyme catalyzes the hydrolysis of ATP coupled with the transport of calcium. Transports calcium ions from the cytosol into the sarcoplasmic/endoplasmic reticulum lumen. Contributes to calcium sequestration involved in muscular excitation/contraction.

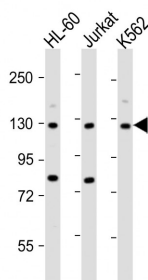
## References

Dode L.,et al.Biochem. J. 318:689-699(1996).  
Dode L.,et al.Biochem. J. 319:1008-1008(1996).  
Dode L.,et al.J. Biol. Chem. 273:13982-13994(1998).  
Poch E.,et al.Am. J. Physiol. 275:C1449-C1458(1998).  
Zody M.C.,et al.Nature 440:1045-1049(2006).

## Images



AP21708a staining ATP2A3 in human brain tissue sections by Immunohistochemistry (IHC-P - paraformaldehyde-fixed, paraffin-embedded sections). Tissue was fixed with formaldehyde and blocked with 3% BSA for 0.5 hour at room temperature; antigen retrieval was by heat mediation with a citrate buffer (pH6). Samples were incubated with primary antibody (1/25) for 1 hour at 37°C. A undiluted biotinylated goat polyvalent antibody was used as the secondary antibody.



All lanes : Anti-ATP2A3 Antibody (N-Term) at 1:2000 dilution Lane 1: HL-60 whole cell lysate Lane 2: Jurkat whole cell lysate Lane 3: K562 whole cell lysate Lysates/proteins at 20 µg per lane. Secondary Goat Anti-Rabbit IgG, (H+L), Peroxidase conjugated at 1/10000 dilution. Predicted band size : 114 kDa Blocking/Dilution buffer: 5% NFDM/TBST.