

AFF1 Antibody (C-term)

Purified Rabbit Polyclonal Antibody (Pab)
Catalog # AP21712b

Product Information

Application	WB, E
Primary Accession	P51825
Reactivity	Human, Mouse
Host	Rabbit
Clonality	polyclonal
Isotype	Rabbit IgG
Clone Names	RB51232
Calculated MW	131422

Additional Information

Gene ID	4299
Other Names	AF4/FMR2 family member 1, ALL1-fused gene from chromosome 4 protein, Protein AF-4, Protein FEL, Proto-oncogene AF4, AFF1, AF4, FEL, MLLT2, PBM1
Target/Specificity	This AFF1 antibody is generated from a rabbit immunized with a KLH conjugated synthetic peptide between 927-961 amino acids from the C-terminal region of human AFF1.
Dilution	WB~~1:1000 E~~Use at an assay dependent concentration.
Format	Purified polyclonal antibody supplied in PBS with 0.09% (W/V) sodium azide. This antibody is purified through a protein A column, followed by peptide affinity purification.
Storage	Maintain refrigerated at 2-8°C for up to 2 weeks. For long term storage store at -20°C in small aliquots to prevent freeze-thaw cycles.
Precautions	AFF1 Antibody (C-term) is for research use only and not for use in diagnostic or therapeutic procedures.

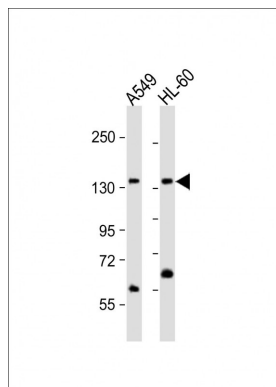
Protein Information

Name	AFF1
Synonyms	AF4, FEL, MLLT2, PBM1
Cellular Location	Nucleus.

References

Nakamura T., et al. Proc. Natl. Acad. Sci. U.S.A. 90:4631-4635(1993).
Morrissey J., et al. Blood 81:1124-1131(1993).
Ota T., et al. Nat. Genet. 36:40-45(2004).
Hillier L.W., et al. Nature 434:724-731(2005).
Gu Y., et al. Cell 71:701-708(1992).

Images



All lanes : Anti-AFF1 Antibody (C-term) at 1:1000 dilution
Lane 1: A549 whole cell lysate Lane 2: HL-60 whole cell lysate
Lysates/proteins at 20 µg per lane. Secondary Goat Anti-Rabbit IgG, (H+L), Peroxidase conjugated at 1/10000 dilution. Predicted band size : 131 kDa
Blocking/Dilution buffer: 5% NFDM/TBST.

Please note: All products are 'FOR RESEARCH USE ONLY. NOT FOR USE IN DIAGNOSTIC OR THERAPEUTIC PROCEDURES'.