

RAE1 Antibody (Center)

Purified Rabbit Polyclonal Antibody (Pab)

Catalog # AP21748c

Product Information

Application	WB, E
Primary Accession	P78406
Reactivity	Human, Rat, Mouse
Host	Rabbit
Clonality	polyclonal
Isotype	Rabbit IgG
Clone Names	RB53280
Calculated MW	40968

Additional Information

Gene ID	8480
Other Names	mRNA export factor, Rae1 protein homolog, mRNA-associated protein mrnp 41, RAE1, MRNP41
Target/Specificity	This RAE1 antibody is generated from a rabbit immunized with a KLH conjugated synthetic peptide between 128-162 amino acids from the Central region of human RAE1.
Dilution	WB~~1:2000 E~~Use at an assay dependent concentration.
Format	Purified polyclonal antibody supplied in PBS with 0.09% (W/V) sodium azide. This antibody is purified through a protein A column, followed by peptide affinity purification.
Storage	Maintain refrigerated at 2-8°C for up to 2 weeks. For long term storage store at -20°C in small aliquots to prevent freeze-thaw cycles.
Precautions	RAE1 Antibody (Center) is for research use only and not for use in diagnostic or therapeutic procedures.

Protein Information

Name	RAE1
Synonyms	MRNP41
Function	Acts as a mRNA export factor involved in nucleocytoplasmic transport (PubMed: 20498086 , PubMed: 33849972). Plays a role in mitotic bipolar spindle formation (PubMed: 17172455). May function in attaching cytoplasmic mRNPs

to the cytoskeleton both directly or indirectly (PubMed:[17172455](#)).

Cellular Location

Cytoplasm. Nucleus. Cytoplasm, cytoskeleton, spindle pole. Nucleus envelope.
Note=Recruited from interphase nuclei to spindle MTs during mitosis.

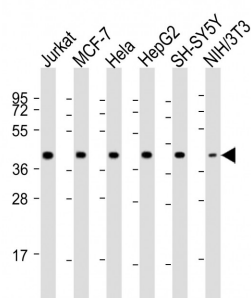
Background

Binds mRNA. May function in nucleocytoplasmic transport and in directly or indirectly attaching cytoplasmic mRNPs to the cytoskeleton.

References

Bharathi A.,et al.Gene 198:251-258(1997).
Kraemer D.M.,et al.Proc. Natl. Acad. Sci. U.S.A. 94:9119-9124(1997).
Lu L.,et al.Submitted (JUL-2003) to the EMBL/GenBank/DDBJ databases.
Ota T.,et al.Nat. Genet. 36:40-45(2004).
Deloukas P.,et al.Nature 414:865-871(2001).

Images



All lanes : Anti-RAE1 Antibody (Center) at 1:2000 dilution
Lane 1: Jurkat whole cell lysate Lane 2: MCF-7 whole cell lysate Lane 3: HeLa whole cell lysate Lane 4: HepG2 whole cell lysate Lane 5: SH-SY5Y whole cell lysate Lane 6: NIH/3T3 whole cell lysate Lysates/proteins at 20 µg per lane. Secondary Goat Anti-Rabbit IgG, (H+L), Peroxidase conjugated at 1/10000 dilution. Predicted band size : 41 kDa Blocking/Dilution buffer: 5% NFDM/TBST.

Please note: All products are 'FOR RESEARCH USE ONLY. NOT FOR USE IN DIAGNOSTIC OR THERAPEUTIC PROCEDURES'.