

DPEP2 Antibody (Center)

Purified Rabbit Polyclonal Antibody (Pab)

Catalog # AP21755c

Product Information

Application	WB, E
Primary Accession	Q9H4A9
Reactivity	Human, Rat, Mouse
Host	Rabbit
Clonality	polyclonal
Isotype	Rabbit IgG
Clone Names	RB53216
Calculated MW	53365

Additional Information

Gene ID	64174
Other Names	Dipeptidase 2, DPEP2
Target/Specificity	This DPEP2 antibody is generated from a rabbit immunized with a KLH conjugated synthetic peptide between 220-254 amino acids from the Central region of human DPEP2.
Dilution	WB~~1 : 500 E~~Use at an assay dependent concentration.
Format	Purified polyclonal antibody supplied in PBS with 0.09% (W/V) sodium azide. This antibody is purified through a protein A column, followed by peptide affinity purification.
Storage	Maintain refrigerated at 2-8°C for up to 2 weeks. For long term storage store at -20°C in small aliquots to prevent freeze-thaw cycles.
Precautions	DPEP2 Antibody (Center) is for research use only and not for use in diagnostic or therapeutic procedures.

Protein Information

Name	DPEP2
Function	Dipeptidase that hydrolyzes leukotriene D4 (LTD4) into leukotriene E4 (LTE4) (PubMed: 32325220). Hydrolyzes cystinyl-bis- glycine (PubMed: 32325220).
Cellular Location	Membrane {ECO:0000250 UniProtKB:Q8C255}; Lipid- anchor, GPI-anchor {ECO:0000250 UniProtKB:Q8C255}

Background

Probable metalloprotease which hydrolyzes leukotriene D4 (LTD4) into leukotriene E4 (LTE4).

References

Chen J.M.,et al.Submitted (OCT-2000) to the EMBL/GenBank/DDBJ databases.

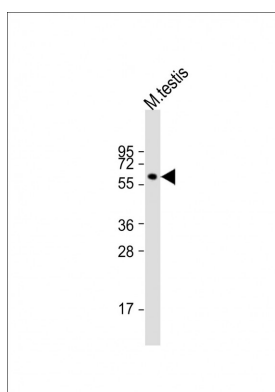
Ota T.,et al.Nat. Genet. 36:40-45(2004).

Martin J.,et al.Nature 432:988-994(2004).

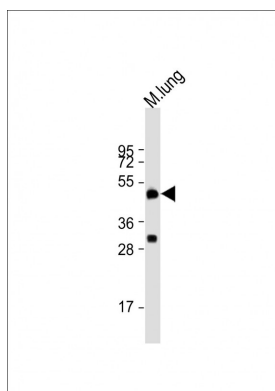
Mural R.J.,et al.Submitted (JUL-2005) to the EMBL/GenBank/DDBJ databases.

Clark H.F.,et al.Genome Res. 13:2265-2270(2003).

Images



Anti-DPEP2 Antibody (Center) at 1:2000 dilution + mouse testis lysate Lysates/proteins at 20 µg per lane. Secondary Goat Anti-Rabbit IgG, (H+L), Peroxidase conjugated at 1/10000 dilution. Predicted band size : 53 kDa
Blocking/Dilution buffer: 5% NFDM/TBST.



Anti-DPEP2 Antibody (Center) at 1:2000 dilution + mouse lung lysate Lysates/proteins at 20 µg per lane. Secondary Goat Anti-Rabbit IgG, (H+L), Peroxidase conjugated at 1/10000 dilution. Predicted band size : 53 kDa
Blocking/Dilution buffer: 5% NFDM/TBST.

Please note: All products are 'FOR RESEARCH USE ONLY. NOT FOR USE IN DIAGNOSTIC OR THERAPEUTIC PROCEDURES'.