

# ATXN2 Antibody (Center)

Purified Rabbit Polyclonal Antibody (Pab)

Catalog # AP21768c

## Product Information

---

<b>Application</b>	WB, E
<b>Primary Accession</b>	<a href="#">Q99700</a>
<b>Reactivity</b>	Human, Mouse
<b>Host</b>	Rabbit
<b>Clonality</b>	polyclonal
<b>Isotype</b>	Rabbit IgG
<b>Clone Names</b>	RB53601
<b>Calculated MW</b>	140283

## Additional Information

---

<b>Gene ID</b>	6311
<b>Other Names</b>	Ataxin-2, Spinocerebellar ataxia type 2 protein, Trinucleotide repeat-containing gene 13 protein, ATXN2, ATX2, SCA2, TNRC13
<b>Target/Specificity</b>	This ATXN2 antibody is generated from a rabbit immunized with a KLH conjugated synthetic peptide between 725-757 amino acids from the Central region of human ATXN2.
<b>Dilution</b>	WB~~1:2000 E~~Use at an assay dependent concentration.
<b>Format</b>	Purified polyclonal antibody supplied in PBS with 0.09% (W/V) sodium azide. This antibody is purified through a protein A column, followed by peptide affinity purification.
<b>Storage</b>	Maintain refrigerated at 2-8°C for up to 2 weeks. For long term storage store at -20°C in small aliquots to prevent freeze-thaw cycles.
<b>Precautions</b>	ATXN2 Antibody (Center) is for research use only and not for use in diagnostic or therapeutic procedures.

## Protein Information

---

<b>Name</b>	ATXN2
<b>Synonyms</b>	ATX2, SCA2, TNRC13
<b>Function</b>	Involved in EGFR trafficking, acting as negative regulator of endocytic EGFR internalization at the plasma membrane.

<b>Cellular Location</b>	Cytoplasm.
<b>Tissue Location</b>	Expressed in the brain, heart, liver, skeletal muscle, pancreas and placenta. Isoform 1 is predominant in the brain and spinal cord. Isoform 4 is more abundant in the cerebellum. In the brain, broadly expressed in the amygdala, caudate nucleus, corpus callosum, hippocampus, hypothalamus, substantia nigra, subthalamic nucleus and thalamus.

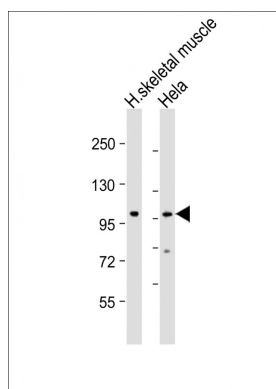
## Background

Involved in EGFR trafficking, acting as negative regulator of endocytic EGFR internalization at the plasma membrane.

## References

Pulst S.-M.,et al.Nat. Genet. 14:269-276(1996).  
 Sanpei K.,et al.Nat. Genet. 14:277-284(1996).  
 Ota T.,et al.Nat. Genet. 36:40-45(2004).  
 Scherer S.E.,et al.Nature 440:346-351(2006).  
 Imbert G.,et al.Nat. Genet. 14:285-291(1996).

## Images



All lanes : Anti-ATXN2 Antibody (Center) at 1:2000 dilution  
 Lane 1: human skeletal muscle lysate Lane 2: HeLa whole cell lysate  
 Lysates/proteins at 20 µg per lane. Secondary Goat Anti-Rabbit IgG, (H+L), Peroxidase conjugated at 1/10000 dilution. Predicted band size : 140 kDa  
 Blocking/Dilution buffer: 5% NFDM/TBST.

Please note: All products are 'FOR RESEARCH USE ONLY. NOT FOR USE IN DIAGNOSTIC OR THERAPEUTIC PROCEDURES'.