

Zebrafish wnt8a Antibody (Center)

Purified Rabbit Polyclonal Antibody (Pab)

Catalog # AP21770c

Product Information

Application	WB, E
Primary Accession	P51028
Reactivity	Zebrafish
Host	Rabbit
Clonality	polyclonal
Isotype	Rabbit IgG
Clone Names	RB53224
Calculated MW	40289

Additional Information

Gene ID	30122
Other Names	Protein Wnt-8a, wnt8a, wnt-8, wnt8
Target/Specificity	This Zebrafish wnt8a antibody is generated from a rabbit immunized with a KLH conjugated synthetic peptide between 135-170 amino acids from the Central region of Zebrafish wnt8a.
Dilution	WB~~1:1000-1:2000 E~~Use at an assay dependent concentration.
Format	Purified polyclonal antibody supplied in PBS with 0.09% (W/V) sodium azide. This antibody is purified through a protein A column, followed by peptide affinity purification.
Storage	Maintain refrigerated at 2-8°C for up to 2 weeks. For long term storage store at -20°C in small aliquots to prevent freeze-thaw cycles.
Precautions	Zebrafish wnt8a Antibody (Center) is for research use only and not for use in diagnostic or therapeutic procedures.

Protein Information

Name	wnt8a
Synonyms	wnt-8, wnt8
Function	Ligand for members of the frizzled family of seven transmembrane receptors (Probable). Required for mesoderm and neural ectoderm patterning during gastrulation (PubMed: 11703928). Involved in axis formation during embryonic development, via activation of canonical Wnt/CTNNB1

signaling (PubMed:[11703928](#), PubMed:[25371059](#)). May be involved in the specification of the spatial patterns of expression of Gsc and other regulatory genes leading to the establishment of the embryonic axis (PubMed:[7600994](#)).

Cellular Location

Secreted, extracellular space, extracellular matrix {ECO:0000250|UniProtKB:Q9H1J5}. Secreted {ECO:0000250|UniProtKB:Q9H1J5}

Tissue Location

Expressed in the margin of the pregastrula embryo destined to be the future mesoderm.

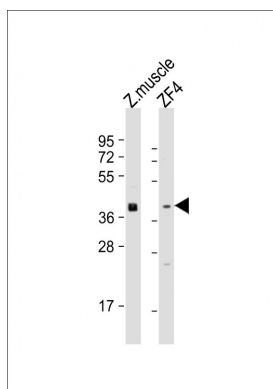
Background

Ligand for members of the frizzled family of seven transmembrane receptors. Probable developmental protein. Is likely to signal over only few cell diameters. May be involved in the specification of the spatial patterns of expression of Gsc and other regulatory genes leading to the establishment of the embryonic axis.

References

Kelly G.M.,et al.Development 121:1787-1799(1995).
Lekven A.C.,et al.Dev. Cell 1:103-114(2001).

Images



All lanes : Anti-Zebrafish wnt8a Antibody (Center) at 1:1000-1:2000 dilution
Lane 1: zebrafish muscle lysate
Lane 2: ZF4 whole cell lysate
Lysates/proteins at 20 µg per lane. Secondary Goat Anti-Rabbit IgG, (H+L), Peroxidase conjugated at 1/10000 dilution. Predicted band size : 40 kDa
Blocking/Dilution buffer: 5% NFDM/TBST.

Citations

- [The ESCRT-Related ATPase Vps4 Is Modulated by Interferon during Herpes Simplex Virus 1 Infection.](#)

Please note: All products are 'FOR RESEARCH USE ONLY. NOT FOR USE IN DIAGNOSTIC OR THERAPEUTIC PROCEDURES'.