

CHRFAM7A Antibody (C-Term)

Purified Rabbit Polyclonal Antibody (Pab)

Catalog # AP21789b

Product Information

Application	WB, E
Primary Accession	Q494W8
Reactivity	Human
Host	Rabbit
Clonality	polyclonal
Isotype	Rabbit IgG
Clone Names	RB53692
Calculated MW	46218

Additional Information

Gene ID	89832
Other Names	CHRNA7-FAM7A fusion protein, CHRNA7-DR1, D-10, CHRFAM7A
Target/Specificity	This CHRFAM7A antibody is generated from a rabbit immunized with a KLH conjugated synthetic peptide between 317-349 amino acids from human CHRFAM7A.
Dilution	WB~~1:2000 E~~Use at an assay dependent concentration.
Format	Purified polyclonal antibody supplied in PBS with 0.09% (W/V) sodium azide. This antibody is purified through a protein A column, followed by peptide affinity purification.
Storage	Maintain refrigerated at 2-8°C for up to 2 weeks. For long term storage store at -20°C in small aliquots to prevent freeze-thaw cycles.
Precautions	CHRFAM7A Antibody (C-Term) is for research use only and not for use in diagnostic or therapeutic procedures.

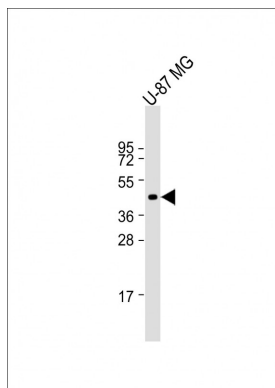
Protein Information

Name	CHRFAM7A
Cellular Location	Membrane; Multi-pass membrane protein
Tissue Location	Expressed in hippocampus.

References

Ota T.,et al.Nat. Genet. 36:40-45(2004).
Zody M.C.,et al.Nature 440:671-675(2006).
Gault J.,et al.Genomics 52:173-185(1998).

Images



Anti-CHRFAM7A Antibody (C-Term) at 1:2000 dilution + U-87 MG whole cell lysate Lysates/proteins at 20 µg per lane. Secondary Goat Anti-Rabbit IgG, (H+L), Peroxidase conjugated at 1/10000 dilution. Predicted band size : 46 kDa Blocking/Dilution buffer: 5% NFDM/TBST.

Please note: All products are 'FOR RESEARCH USE ONLY. NOT FOR USE IN DIAGNOSTIC OR THERAPEUTIC PROCEDURES'.