

PTGES2 Antibody (Center)

Purified Rabbit Polyclonal Antibody (Pab)

Catalog # AP21806c

Product Information

Application	WB, E
Primary Accession	Q9H7Z7
Reactivity	Human, Mouse
Host	Rabbit
Clonality	polyclonal
Isotype	Rabbit IgG
Clone Names	RB48401
Calculated MW	41943

Additional Information

Gene ID	80142
Other Names	Prostaglandin E synthase 2, Membrane-associated prostaglandin E synthase-2, mPGE synthase-2, Microsomal prostaglandin E synthase 2, mPGES-2, Prostaglandin-H(2) E-isomerase, Prostaglandin E synthase 2 truncated form, PTGES2, C9orf15, PGES2
Target/Specificity	This PTGES2 antibody is generated from a rabbit immunized with a KLH conjugated synthetic peptide between 113-146 amino acids from the Central region of human PTGES2.
Dilution	WB~~1:2000 E~~Use at an assay dependent concentration.
Format	Purified polyclonal antibody supplied in PBS with 0.09% (W/V) sodium azide. This antibody is purified through a protein A column, followed by peptide affinity purification.
Storage	Maintain refrigerated at 2-8°C for up to 2 weeks. For long term storage store at -20°C in small aliquots to prevent freeze-thaw cycles.
Precautions	PTGES2 Antibody (Center) is for research use only and not for use in diagnostic or therapeutic procedures.

Protein Information

Name	PTGES2
Synonyms	C9orf15, PGES2
Function	Isomerase that catalyzes the conversion of PGH2 into the more stable

prostaglandin E2 (PGE2) (in vitro) (PubMed:[12804604](#), PubMed:[17585783](#), PubMed:[18198127](#)). The biological function and the GSH- dependent property of PTGES2 is still under debate (PubMed:[17585783](#), PubMed:[18198127](#)). In vivo, PTGES2 could form a complex with GSH and heme and would not participate in PGE2 synthesis but would catalyze the degradation of prostaglandin E2 H2 (PGH2) to 12(S)-hydroxy-5(Z),8(E),10(E)-heptadecatrienoic acid (HHT) and malondialdehyde (MDA) (By similarity) (PubMed:[17585783](#)).

Cellular Location

Golgi apparatus membrane; Single-pass membrane protein

Tissue Location

Widely expressed. Expressed in the heart, including apex, inter-ventricular septum, both atria and ventricles, but not in the aorta. Also expressed in fetal heart. Detected in various regions of the brain: cerebellum; occipital, frontal and parietal lobes. Also expressed in the lymph nodes, skeletal muscle, kidney and trachea, but not in the thymus or lung. Overexpressed in colorectal cancer

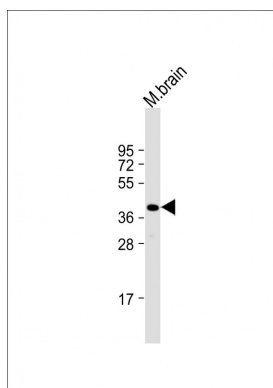
Background

Isomerase that catalyzes the conversion of PGH2 into the more stable prostaglandin E2 (PGE2).

References

Ota T.,et al.Nat. Genet. 36:40-45(2004).
Totoki Y.,et al.Submitted (APR-2005) to the EMBL/GenBank/DDBJ databases.
Humphray S.J.,et al.Nature 429:369-374(2004).
Tanikawa N.,et al.Biochem. Biophys. Res. Commun. 291:884-889(2002).
Watanabe K.,et al.Biochem. Biophys. Res. Commun. 306:577-581(2003).

Images



Anti-PTGES2 Antibody (Center) at 1:2000 dilution + mouse brain lysate Lysates/proteins at 20 µg per lane. Secondary Goat Anti-Rabbit IgG, (H+L), Peroxidase conjugated at 1/10000 dilution. Predicted band size : 42 kDa
Blocking/Dilution buffer: 5% NFDm/TBST.

Please note: All products are 'FOR RESEARCH USE ONLY. NOT FOR USE IN DIAGNOSTIC OR THERAPEUTIC PROCEDURES'.