

PLA2G4D Antibody (C-Term)

Purified Rabbit Polyclonal Antibody (Pab)

Catalog # AP21807b

Product Information

Application	WB, E
Primary Accession	Q86XP0
Reactivity	Human
Host	Rabbit
Clonality	polyclonal
Isotype	Rabbit IgG
Clone Names	RB53737
Calculated MW	91952

Additional Information

Gene ID	283748
Other Names	Cytosolic phospholipase A2 delta, cPLA2-delta, Phospholipase A2 group IVD, PLA2G4D
Target/Specificity	This PLA2G4D antibody is generated from a rabbit immunized with a KLH conjugated synthetic peptide between 754-786 amino acids from human PLA2G4D.
Dilution	WB~~1:2000 E~~Use at an assay dependent concentration.
Format	Purified polyclonal antibody supplied in PBS with 0.09% (W/V) sodium azide. This antibody is purified through a protein A column, followed by peptide affinity purification.
Storage	Maintain refrigerated at 2-8°C for up to 2 weeks. For long term storage store at -20°C in small aliquots to prevent freeze-thaw cycles.
Precautions	PLA2G4D Antibody (C-Term) is for research use only and not for use in diagnostic or therapeutic procedures.

Protein Information

Name	PLA2G4D (HGNC:30038)
Function	Calcium-dependent phospholipase A2 that selectively hydrolyzes glycerophospholipids in the sn-2 position (PubMed: 14709560). Has a preference for linoleic acid at the sn-2 position (PubMed: 14709560).
Cellular Location	Cytoplasm, cytosol {ECO:0000250 UniProtKB:Q50L43}. Membrane

{ECO:0000250|UniProtKB:Q50L43}; Peripheral membrane protein
{ECO:0000250|UniProtKB:Q50L43}; Cytoplasmic side
{ECO:0000250|UniProtKB:Q50L43}. Note=Translocates to perinuclear membranes that may correspond to endoplasmic reticulum or Golgi in a calcium-dependent fashion. {ECO:0000250|UniProtKB:Q50L43}

Tissue Location

Expressed in stratified squamous epithelia, such as those in skin and cervix, but not in other tissues (PubMed:14709560) Strongly expressed in the upper spinous layer of the psoriatic epidermis, expressed weakly and discontinuously in atopic dermatitis and mycosis fungoides, and not detected in the epidermis of normal skin (PubMed:14709560).

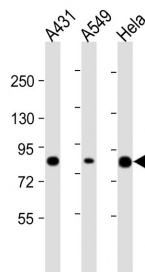
Background

Calcium-dependent phospholipase A2 that selectively hydrolyzes glycerophospholipids in the sn-2 position. Not arachidonic acid-specific but has linoleic acid-specific activity. May play a role in inflammation in psoriatic lesions.

References

Chiba H.,et al.J. Biol. Chem. 279:12890-12897(2004).
Zody M.C.,et al.Nature 440:671-675(2006).
Tao R.,et al.Prostaglandins Leukot. Essent. Fatty Acids 73:419-422(2005).

Images



All lanes : Anti-PLA2G4D Antibody (C-Term) at 1:2000 dilution
Lane 1: A431 whole cell lysate
Lane 2: A549 whole cell lysate
Lane 3: HeLa whole cell lysate
Lysates/proteins at 20 µg per lane. Secondary Goat Anti-Rabbit IgG, (H+L), Peroxidase conjugated at 1/10000 dilution. Predicted band size : 92 kDa
Blocking/Dilution buffer: 5% NFDM/TBST.

Please note: All products are 'FOR RESEARCH USE ONLY. NOT FOR USE IN DIAGNOSTIC OR THERAPEUTIC PROCEDURES'.