

RGS3 Antibody (N-Term)

Purified Rabbit Polyclonal Antibody (Pab)

Catalog # AP21810a

Product Information

Application	WB, E
Primary Accession	P49796
Reactivity	Human, Mouse
Host	Rabbit
Clonality	polyclonal
Isotype	Rabbit IgG
Clone Names	RB53399
Calculated MW	132336

Additional Information

Gene ID	5998
Other Names	Regulator of G-protein signaling 3, RGP3, RGS3, RGS3
Target/Specificity	This RGS3 antibody is generated from a rabbit immunized with a KLH conjugated synthetic peptide between 273-307 amino acids from human RGS3.
Dilution	WB~~1:1000 E~~Use at an assay dependent concentration.
Format	Purified polyclonal antibody supplied in PBS with 0.09% (W/V) sodium azide. This antibody is purified through a protein A column, followed by peptide affinity purification.
Storage	Maintain refrigerated at 2-8°C for up to 2 weeks. For long term storage store at -20°C in small aliquots to prevent freeze-thaw cycles.
Precautions	RGS3 Antibody (N-Term) is for research use only and not for use in diagnostic or therapeutic procedures.

Protein Information

Name	RGS3
Function	Down-regulates signaling from heterotrimeric G-proteins by increasing the GTPase activity of the alpha subunits, thereby driving them into their inactive GDP-bound form. Down-regulates G-protein- mediated release of inositol phosphates and activation of MAP kinases.
Cellular Location	Cytoplasm. Nucleus. Cell membrane; Peripheral membrane protein.

Note=Long isoforms are cytoplasmic and associated with the plasma membrane (PubMed:9858594). Short isoforms are nuclear (PubMed:10749886)

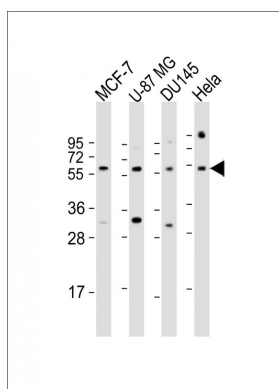
Background

Down-regulates signaling from heterotrimeric G-proteins by increasing the GTPase activity of the alpha subunits, thereby driving them into their inactive GDP-bound form. Down-regulates G- protein-mediated release of inositol phosphates and activation of MAP kinases.

References

Druey K.M.,et al.Nature 379:742-746(1996).
Kehrl J.H.,et al.Genomics 79:860-868(2002).
Ota T.,et al.Nat. Genet. 36:40-45(2004).
Chatterjee T.K.,et al.Submitted (DEC-2001) to the EMBL/GenBank/DDBJ databases.
Puhl H.L. III,et al.Submitted (MAR-2004) to the EMBL/GenBank/DDBJ databases.

Images



All lanes : Anti-RGS3 Antibody (N-Term) at 1:1000 dilution
Lane 1: MCF-7 whole cell lysate Lane 2: U-87 MG whole cell lysate Lane 3: DU145 whole cell lysate Lane 4: HeLa whole cell lysate Lysates/proteins at 20 µg per lane.
Secondary Goat Anti-Rabbit IgG, (H+L), Peroxidase conjugated at 1/10000 dilution. Predicted band size : 57 kDa Blocking/Dilution buffer: 5% NFDM/TBST.

Please note: All products are 'FOR RESEARCH USE ONLY. NOT FOR USE IN DIAGNOSTIC OR THERAPEUTIC PROCEDURES'.