

HUMAN-LDHB(Y240)

Purified Rabbit Polyclonal Antibody (Pab)

Catalog # AP21816a

Product Information

Application	WB, E
Primary Accession	P07195
Reactivity	Human, Rat, Mouse
Host	Rabbit
Clonality	polyclonal
Isotype	Rabbit IgG
Clone Names	RB47345
Calculated MW	36638

Additional Information

Gene ID	3945
Other Names	L-lactate dehydrogenase B chain, LDH-B, LDH heart subunit, LDH-H, Renal carcinoma antigen NY-REN-46, LDHB
Target/Specificity	This antibody is generated from a rabbit immunized with a KLH conjugated synthetic peptide between 220-250 amino acids of human.
Dilution	WB~~1:2000 E~~Use at an assay dependent concentration.
Format	Purified polyclonal antibody supplied in PBS with 0.09% (W/V) sodium azide. This antibody is purified through a protein A column, followed by peptide affinity purification.
Storage	Maintain refrigerated at 2-8°C for up to 2 weeks. For long term storage store at -20°C in small aliquots to prevent freeze-thaw cycles.
Precautions	HUMAN-LDHB(Y240) is for research use only and not for use in diagnostic or therapeutic procedures.

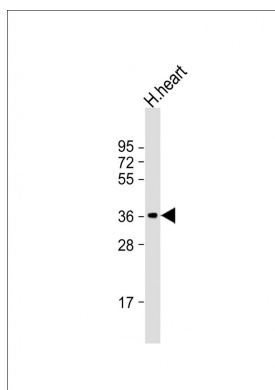
Protein Information

Name	LDHB
Function	Interconverts simultaneously and stereospecifically pyruvate and lactate with concomitant interconversion of NADH and NAD(+).
Cellular Location	Cytoplasm. Mitochondrion inner membrane; Peripheral membrane protein
Tissue Location	Predominantly expressed in aerobic tissues such as cardiac muscle.

References

Takeno T.,et al.Biochem. J. 257:921-924(1989).
Sakai I.,et al.Biochem. J. 248:933-936(1987).
Bienvenut W.V.,et al.Submitted (MAY-2005) to UniProtKB.
Lubec G.,et al.Submitted (DEC-2008) to UniProtKB.
Scanlan M.J.,et al.Int. J. Cancer 83:456-464(1999).

Images



Anti-LDHB Antibody (Y240) at 1:2000 dilution + human heart lysate Lysates/proteins at 20 µg per lane. Secondary Goat Anti-Rabbit IgG, (H+L), Peroxidase conjugated at 1/10000 dilution. Predicted band size : 37 kDa
Blocking/Dilution buffer: 5% NFDM/TBST.

Citations

- [LXR/RXR pathway signaling associated with triple-negative breast cancer in African American women.](#)

Please note: All products are 'FOR RESEARCH USE ONLY. NOT FOR USE IN DIAGNOSTIC OR THERAPEUTIC PROCEDURES'.