

UQCRFS1P1 Antibody (Center)

Purified Rabbit Polyclonal Antibody (Pab)

Catalog # AP21829c

Product Information

Application	WB, E
Primary Accession	P0C7P4
Reactivity	Human
Host	Rabbit
Clonality	polyclonal
Isotype	Rabbit IgG
Clone Names	RB53862
Calculated MW	30815

Additional Information

Other Names	Putative cytochrome b-c1 complex subunit Rieske-like protein 1, Ubiquinol-cytochrome c reductase Rieske iron-sulfur subunit pseudogene 1, UQCRFS1P1, UQCRFSL1
Target/Specificity	This UQCRFS1P1 antibody is generated from a rabbit immunized with a KLH conjugated synthetic peptide between 71-104 amino acids from the Central region of human UQCRFS1P1.
Dilution	WB~~1:2000 E~~Use at an assay dependent concentration.
Format	Purified polyclonal antibody supplied in PBS with 0.09% (W/V) sodium azide. This antibody is purified through a protein A column, followed by peptide affinity purification.
Storage	Maintain refrigerated at 2-8°C for up to 2 weeks. For long term storage store at -20°C in small aliquots to prevent freeze-thaw cycles.
Precautions	UQCRFS1P1 Antibody (Center) is for research use only and not for use in diagnostic or therapeutic procedures.

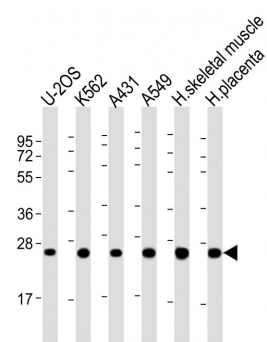
Protein Information

Name	UQCRFS1P1
Synonyms	UQCRFSL1
Cellular Location	Membrane; Single-pass membrane protein

References

Dunham I.,et al.Nature 402:489-495(1999).
Li W.B.,et al.Submitted (JUL-2004) to the EMBL/GenBank/DDBJ databases.

Images



All lanes : Anti-UQCRFS1P1 Antibody (Center) at 1:2000 dilution Lane 1: U-2OS whole cell lysate Lane 2: K562 whole cell lysate Lane 3: A431 whole cell lysate Lane 4: A549 whole cell lysate Lane 5: human skeletal muscle lysate Lane 6: human placenta lysate Lysates/proteins at 20 µg per lane. Secondary Goat Anti-Rabbit IgG, (H+L), Peroxidase conjugated at 1/10000 dilution. Predicted band size : 31 kDa Blocking/Dilution buffer: 5% NFDM/TBST.

Please note: All products are 'FOR RESEARCH USE ONLY. NOT FOR USE IN DIAGNOSTIC OR THERAPEUTIC PROCEDURES'.