

Epsin2 Antibody (N-term)

Purified Rabbit Polyclonal Antibody (Pab)

Catalog # AP2182a

Product Information

Application	WB, IHC-P, E
Primary Accession	Q95208
Other Accession	Q9Z1Z3 , Q8CHU3 , Q88339 , Q80VP1 , Q9Y6I3 , Q8IYW4
Reactivity	Human, Rat, Mouse
Predicted	Rat
Host	Rabbit
Clonality	Polyclonal
Isotype	Rabbit IgG
Clone Names	RB4610
Calculated MW	68482
Antigen Region	6-36

Additional Information

Gene ID	22905
Other Names	Epsin-2, EPS-15-interacting protein 2, EPN2, KIAA1065
Target/Specificity	This Epsin2 antibody is generated from rabbits immunized with a KLH conjugated synthetic peptide between 6-36 amino acids from the N-terminal region of human Epsin2.
Dilution	WB~~1:2000 IHC-P~~1:100~500 E~~Use at an assay dependent concentration.
Format	Purified polyclonal antibody supplied in PBS with 0.09% (W/V) sodium azide. This antibody is prepared by Saturated Ammonium Sulfate (SAS) precipitation followed by dialysis against PBS.
Storage	Maintain refrigerated at 2-8°C for up to 2 weeks. For long term storage store at -20°C in small aliquots to prevent freeze-thaw cycles.
Precautions	Epsin2 Antibody (N-term) is for research use only and not for use in diagnostic or therapeutic procedures.

Protein Information

Name	EPN2
Synonyms	KIAA1065
Function	Plays a role in the formation of clathrin-coated invaginations and

endocytosis.

Cellular Location

Cytoplasm. Cytoplasmic vesicle, clathrin-coated vesicle. Note=In punctate structures throughout the cell, associated with clathrin-coated vesicles, and particularly concentrated in the region of the Golgi complex

Tissue Location

Highest expression is found in brain. Detected at lower levels in lung and liver.

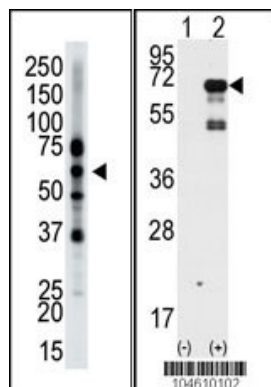
Background

Epsin2 plays a role in the formation of clathrin-coated invaginations and endocytosis. It binds to EPS15 (via the NPF repeat domain), as well as to AP-2 and clathrin (via the DPW repeat domain). The protein resides in the cytoplasm, in punctate structures throughout the cell, associated with clathrin-coated vesicles, and is particularly concentrated in the region of the Golgi complex. Highest expression is found in brain, with lower levels detected in lung and liver.

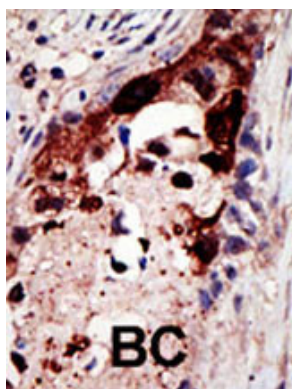
References

Ota, T., et al., Nat. Genet. 36(1):40-45 (2004).
Kikuno, R., et al., DNA Res. 6(3):197-205 (1999).
Rosenthal, J.A., et al., J. Biol. Chem. 274(48):33959-33965 (1999).

Images



The anti-Epsin2 Pab (Cat. #AP2182a) is used in Western blot to detect Epsin2 in mouse brain tissue lysate.



Formalin-fixed and paraffin-embedded human cancer tissue reacted with the primary antibody, which was peroxidase-conjugated to the secondary antibody, followed by AEC staining. This data demonstrates the use of this antibody for immunohistochemistry; clinical relevance has not been evaluated. BC = breast carcinoma; HC = hepatocarcinoma.

Citations

- [Endocytic recycling protein FHD1 regulates primary cilia morphogenesis and SHH signaling during neural tube development.](#)

Please note: All products are 'FOR RESEARCH USE ONLY. NOT FOR USE IN DIAGNOSTIC OR THERAPEUTIC PROCEDURES'.