

NDC80 Antibody (C-Term)

Purified Rabbit Polyclonal Antibody (Pab)

Catalog # AP21833b

Product Information

Application	WB, E
Primary Accession	Q14777
Reactivity	Human
Host	Rabbit
Clonality	polyclonal
Isotype	Rabbit IgG
Clone Names	RB53951
Calculated MW	73913

Additional Information

Gene ID	10403
Other Names	Kinetochore protein NDC80 homolog, Highly expressed in cancer protein, Kinetochore protein Hec1, HsHec1, Kinetochore-associated protein 2, Retinoblastoma-associated protein HEC, NDC80, HEC, HEC1, KNTC2
Target/Specificity	This NDC80 antibody is generated from a rabbit immunized with a KLH conjugated synthetic peptide between 594-628 amino acids from human NDC80.
Dilution	WB~~1:2000 E~~Use at an assay dependent concentration.
Format	Purified polyclonal antibody supplied in PBS with 0.09% (W/V) sodium azide. This antibody is purified through a protein A column, followed by peptide affinity purification.
Storage	Maintain refrigerated at 2-8°C for up to 2 weeks. For long term storage store at -20°C in small aliquots to prevent freeze-thaw cycles.
Precautions	NDC80 Antibody (C-Term) is for research use only and not for use in diagnostic or therapeutic procedures.

Protein Information

Name	NDC80
Synonyms	HEC, HEC1, KNTC2
Function	Acts as a component of the essential kinetochore-associated NDC80 complex, which is required for chromosome segregation and spindle

checkpoint activity (PubMed:[12351790](#), PubMed:[14654001](#), PubMed:[14699129](#), PubMed:[15062103](#), PubMed:[15235793](#), PubMed:[15239953](#), PubMed:[15548592](#), PubMed:[16732327](#), PubMed:[30409912](#), PubMed:[9315664](#)). Required for kinetochore integrity and the organization of stable microtubule binding sites in the outer plate of the kinetochore (PubMed:[15548592](#), PubMed:[30409912](#)). The NDC80 complex synergistically enhances the affinity of the SKA1 complex for microtubules and may allow the NDC80 complex to track depolymerizing microtubules (PubMed:[23085020](#)). Plays a role in chromosome congression and is essential for the end-on attachment of the kinetochores to spindle microtubules (PubMed:[23891108](#), PubMed:[25743205](#)).

Cellular Location

Nucleus. Chromosome, centromere, kinetochore. Note=Localizes to kinetochores from late prophase to anaphase (PubMed:14699129) Localizes specifically to the outer plate of the kinetochore (PubMed:14699129).

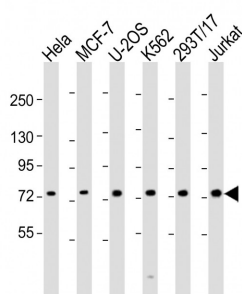
Background

Acts as a component of the essential kinetochore- associated NDC80 complex, which is required for chromosome segregation and spindle checkpoint activity. Required for kinetochore integrity and the organization of stable microtubule binding sites in the outer plate of the kinetochore.

References

Chen Y.,et al.Mol. Cell. Biol. 17:6049-6056(1997).
Chen Y.,et al.J. Biol. Chem. 272:24081-24087(1997).
Zheng L.,et al.Mol. Cell. Biol. 19:5417-5428(1999).
Zheng L.,et al.Mol. Cell. Biol. 20:3529-3537(2000).
Chen Y.,et al.J. Biol. Chem. 277:49408-49416(2002).

Images



All lanes : Anti-NDC80 Antibody (C-Term) at 1:2000 dilution
Lane 1: HeLa whole cell lysate
Lane 2: MCF-7 whole cell lysate
Lane 3: U-2OS whole cell lysate
Lane 4: K562 whole cell lysate
Lane 5: 293T/17 whole cell lysate
Lane 6: Jurkat whole cell lysate
Lysates/proteins at 20 µg per lane. Secondary Goat Anti-Rabbit IgG, (H+L), Peroxidase conjugated at 1/10000 dilution. Predicted band size : 74 kDa
Blocking/Dilution buffer: 5% NFDM/TBST.

Please note: All products are 'FOR RESEARCH USE ONLY. NOT FOR USE IN DIAGNOSTIC OR THERAPEUTIC PROCEDURES'.