

DLEU7 Antibody (N-Term)

Purified Rabbit Polyclonal Antibody (Pab)

Catalog # AP21846a

Product Information

Application	WB, E
Primary Accession	Q6UYE1
Reactivity	Human
Host	Rabbit
Clonality	polyclonal
Isotype	Rabbit IgG
Clone Names	RB54115
Calculated MW	23924

Additional Information

Gene ID	220107
Other Names	Leukemia-associated protein 7, Deleted in lymphocytic leukemia 7, DLEU7, LEU7
Target/Specificity	This DLEU7 antibody is generated from a rabbit immunized with a KLH conjugated synthetic peptide between 58-89 amino acids from human DLEU7.
Dilution	WB~~1:2000 E~~Use at an assay dependent concentration.
Format	Purified polyclonal antibody supplied in PBS with 0.09% (W/V) sodium azide. This antibody is purified through a protein A column, followed by peptide affinity purification.
Storage	Maintain refrigerated at 2-8°C for up to 2 weeks. For long term storage store at -20°C in small aliquots to prevent freeze-thaw cycles.
Precautions	DLEU7 Antibody (N-Term) is for research use only and not for use in diagnostic or therapeutic procedures.

Protein Information

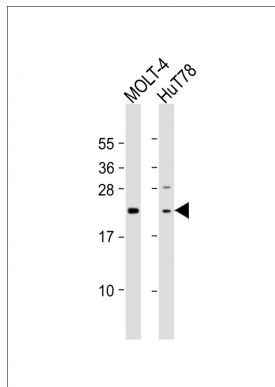
Name	DLEU7
Synonyms	LEU7
Tissue Location	Ubiquitous..

References

Hammarsund M.,et al.FEBS Lett. 556:75-80(2004).

Ota T.,et al.Nat. Genet. 36:40-45(2004).

Images



All lanes : Anti-DLEU7 Antibody (N-Term) at 1:2000 dilution Lane 1: MOLT-4 whole cell lysate Lane 2: HuT78 whole cell lysate Lysates/proteins at 20 µg per lane. Secondary Goat Anti-Rabbit IgG, (H+L), Peroxidase conjugated at 1/10000 dilution. Predicted band size : 24 kDa Blocking/Dilution buffer: 5% NFDM/TBST.

Please note: All products are 'FOR RESEARCH USE ONLY. NOT FOR USE IN DIAGNOSTIC OR THERAPEUTIC PROCEDURES'.