

# CLIC2 Antibody (Center)

Purified Rabbit Polyclonal Antibody (Pab)

Catalog # AP21857c

## Product Information

---

<b>Application</b>	WB, E
<b>Primary Accession</b>	<a href="#">O15247</a>
<b>Other Accession</b>	<a href="#">Q5M883</a>
<b>Reactivity</b>	Human, Rat
<b>Predicted</b>	Rat
<b>Host</b>	Rabbit
<b>Clonality</b>	polyclonal
<b>Isotype</b>	Rabbit IgG
<b>Clone Names</b>	RB54003
<b>Calculated MW</b>	28356

## Additional Information

---

<b>Gene ID</b>	1193
<b>Other Names</b>	Chloride intracellular channel protein 2, XAP121, CLIC2
<b>Target/Specificity</b>	This CLIC2 antibody is generated from a rabbit immunized with a KLH conjugated synthetic peptide between 105-137 amino acids from the Central region of human CLIC2.
<b>Dilution</b>	WB~~1:2000 E~~Use at an assay dependent concentration.
<b>Format</b>	Purified polyclonal antibody supplied in PBS with 0.09% (W/V) sodium azide. This antibody is purified through a protein A column, followed by peptide affinity purification.
<b>Storage</b>	Maintain refrigerated at 2-8°C for up to 2 weeks. For long term storage store at -20°C in small aliquots to prevent freeze-thaw cycles.
<b>Precautions</b>	CLIC2 Antibody (Center) is for research use only and not for use in diagnostic or therapeutic procedures.

## Protein Information

---

<b>Name</b>	CLIC2 {ECO:0000303   PubMed:9339381, ECO:0000312   HGNC:HGNC:2063}
<b>Function</b>	In the soluble state, catalyzes glutaredoxin-like thiol disulfide exchange reactions with reduced glutathione as electron donor. Displays weak glutathione peroxidase activity (Probable) (PubMed: <a href="#">25581026</a> ). Can insert into membranes and form chloride ion channels. Membrane insertion seems to

be redox-regulated and may occur only under oxidizing conditions. Modulates the activity of RYR2 and inhibits calcium influx.

**Cellular Location**

Cytoplasm. Membrane; Single-pass membrane protein. Note=Exists both as soluble cytoplasmic protein and as membrane protein with probably a single transmembrane domain

**Tissue Location**

Expressed in adult and fetal brain, heart, skeletal muscle, liver, lung, and spleen. Detected in adult stomach and testis Expressed in fetal thymus and kidney.

## Background

---

Can insert into membranes and form chloride ion channels. Channel activity depends on the pH. Membrane insertion seems to be redox-regulated and may occur only under oxydizing conditions. Modulates the activity of RYR2 and inhibits calcium influx.

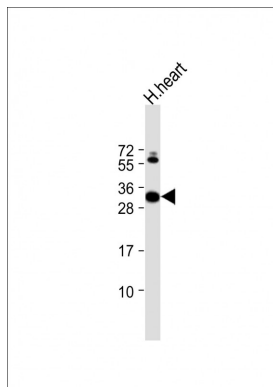
## References

---

Heiss N.S.,et al.Genomics 45:224-228(1997).  
Ota T.,et al.Nat. Genet. 36:40-45(2004).  
Ross M.T.,et al.Nature 434:325-337(2005).  
Mural R.J.,et al.Submitted (SEP-2005) to the EMBL/GenBank/DDBJ databases.  
Fan L.,et al.FEBS Lett. 540:77-80(2003).

## Images

---



Anti-CLIC2 Antibody (Center) at 1:2000 dilution + human heart lysate Lysates/proteins at 20 µg per lane. Secondary Goat Anti-Rabbit IgG, (H+L), Peroxidase conjugated at 1/10000 dilution. Predicted band size : 28 kDa  
Blocking/Dilution buffer: 5% NFDm/TBST.

Please note: All products are 'FOR RESEARCH USE ONLY. NOT FOR USE IN DIAGNOSTIC OR THERAPEUTIC PROCEDURES'.