

# FLNB Antibody (N-Term)

Purified Rabbit Polyclonal Antibody (Pab)

Catalog # AP21863a

## Product Information

---

<b>Application</b>	WB, E
<b>Primary Accession</b>	<a href="#">Q75369</a>
<b>Other Accession</b>	<a href="#">Q80X90</a>
<b>Reactivity</b>	Human, Mouse
<b>Predicted</b>	Mouse
<b>Host</b>	Rabbit
<b>Clonality</b>	polyclonal
<b>Isotype</b>	Rabbit IgG
<b>Clone Names</b>	RB54052
<b>Calculated MW</b>	278164

## Additional Information

---

<b>Gene ID</b>	2317
<b>Other Names</b>	Filamin-B, FLN-B, ABP-278, ABP-280 homolog, Actin-binding-like protein, Beta-filamin, Filamin homolog 1, Fh1, Filamin-3, Thyroid autoantigen, Truncated actin-binding protein, Truncated ABP, FLNB, FLN1L, FLN3, TABP, TAP
<b>Target/Specificity</b>	This FLNB antibody is generated from a rabbit immunized with a KLH conjugated synthetic peptide between 288-322 amino acids from human FLNB.
<b>Dilution</b>	WB~~1:2000 E~~Use at an assay dependent concentration.
<b>Format</b>	Purified polyclonal antibody supplied in PBS with 0.09% (W/V) sodium azide. This antibody is purified through a protein A column, followed by peptide affinity purification.
<b>Storage</b>	Maintain refrigerated at 2-8°C for up to 2 weeks. For long term storage store at -20°C in small aliquots to prevent freeze-thaw cycles.
<b>Precautions</b>	FLNB Antibody (N-Term) is for research use only and not for use in diagnostic or therapeutic procedures.

## Protein Information

---

<b>Name</b>	FLNB
<b>Synonyms</b>	FLN1L, FLN3, TABP, TAP

<b>Function</b>	Connects cell membrane constituents to the actin cytoskeleton. May promote orthogonal branching of actin filaments and links actin filaments to membrane glycoproteins. Anchors various transmembrane proteins to the actin cytoskeleton. Interaction with FLNA may allow neuroblast migration from the ventricular zone into the cortical plate. Various interactions and localizations of isoforms affect myotube morphology and myogenesis. Isoform 6 accelerates muscle differentiation in vitro.
<b>Cellular Location</b>	[Isoform 1]: Cytoplasm, cell cortex. Cytoplasm, cytoskeleton. Cytoplasm, cytoskeleton, stress fiber. Cytoplasm, myofibril, sarcomere, Z line. Note=In differentiating myotubes, isoform 1, isoform 2 and isoform 3 are localized diffusely throughout the cytoplasm with regions of enrichment at the longitudinal actin stress fiber. In differentiated tubes, isoform 1 is also detected within the Z-lines [Isoform 3]: Cytoplasm, cytoskeleton, stress fiber
<b>Tissue Location</b>	Ubiquitous. Isoform 1 and isoform 2 are expressed in placenta, bone marrow, brain, umbilical vein endothelial cells (HUVEC), retina and skeletal muscle. Isoform 1 is predominantly expressed in prostate, uterus, liver, thyroid, stomach, lymph node, small intestine, spleen, skeletal muscle, kidney, placenta, pancreas, heart, lung, platelets, endothelial cells, megakaryocytic and erythroleukemic cell lines. Isoform 2 is predominantly expressed in spinal cord, platelet and Daudi cells. Also expressed in thyroid adenoma, neurofibrillary tangles (NFT), senile plaques in the hippocampus and cerebral cortex in Alzheimer disease (AD). Isoform 3 and isoform 6 are expressed predominantly in lung, heart, skeletal muscle, testis, spleen, thymus and leukocytes. Isoform 4 and isoform 5 are expressed in heart.

## Background

---

Connects cell membrane constituents to the actin cytoskeleton. May promote orthogonal branching of actin filaments and links actin filaments to membrane glycoproteins. Anchors various transmembrane proteins to the actin cytoskeleton. Interaction with FLNA may allow neuroblast migration from the ventricular zone into the cortical plate. Various interactions and localizations of isoforms affect myotube morphology and myogenesis. Isoform 6 accelerates muscle differentiation in vitro.

## References

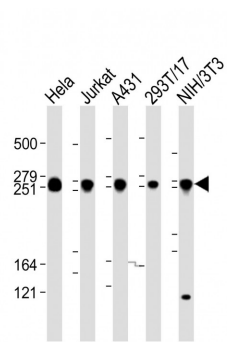
---

Takafuta T.,et al.J. Biol. Chem. 273:17531-17538(1998).  
 Xu W.-F.,et al.Blood 92:1268-1276(1998).  
 van Der Flier A.,et al.J. Cell Biol. 156:361-376(2002).  
 Chakarova C.,et al.Hum. Genet. 107:597-611(2000).  
 Oshikawa M.,et al.DNA Res. 15:123-136(2008).

## Images

---

All lanes : Anti-FLNB Antibody (N-Term) at 1:2000 dilution  
 Lane 1: Hela whole cell lysate Lane 2: Jurkat whole cell lysate Lane 3: A431 whole cell lysate Lane 4: 293T/17 whole cell lysate Lane 5: NIH/3T3 whole cell lysate  
 Lysates/proteins at 20 µg per lane. Secondary Goat Anti-Rabbit IgG, (H+L), Peroxidase conjugated at 1/10000 dilution. Predicted band size : 278 kDa Blocking/Dilution buffer: 5% NFDM/TBST.



Please note: All products are 'FOR RESEARCH USE ONLY. NOT FOR USE IN DIAGNOSTIC OR THERAPEUTIC PROCEDURES'.