

NUGGC Antibody (Center)

Purified Rabbit Polyclonal Antibody (Pab)

Catalog # AP21865c

Product Information

Application	WB, E
Primary Accession	Q68CJ6
Reactivity	Human
Host	Rabbit
Clonality	polyclonal
Isotype	Rabbit IgG
Clone Names	RB54133
Calculated MW	91132

Additional Information

Gene ID	389643
Other Names	Nuclear GTPase SLIP-GC, 361-, Speckled-like pattern in the germinal center, NUGGC, C8orf80
Target/Specificity	This C8orf80 antibody is generated from a rabbit immunized with a KLH conjugated synthetic peptide between 279-311 amino acids from the Central region of human NUGGC.
Dilution	WB~~1:2000 E~~Use at an assay dependent concentration.
Format	Purified polyclonal antibody supplied in PBS with 0.09% (W/V) sodium azide. This antibody is purified through a protein A column, followed by peptide affinity purification.
Storage	Maintain refrigerated at 2-8°C for up to 2 weeks. For long term storage store at -20°C in small aliquots to prevent freeze-thaw cycles.
Precautions	NUGGC Antibody (Center) is for research use only and not for use in diagnostic or therapeutic procedures.

Protein Information

Name	NUGGC
Synonyms	C8orf80
Function	Nuclear GTPase found in germinal center B-cells, where it may inhibit function of the activation-induced cytidine deaminase AICDA (PubMed: 19734146). Reduces somatic hypermutation in B-cells which may

enhance genome stability (By similarity).

Cellular Location

Nucleus speckle.

Tissue Location

Expressed in germinal center B-cell and in lymphomas derived from germinal center B-cell

Background

Plays a role as replication-related GTPase protein in germinal center B-cell.

References

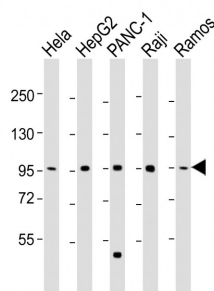
Nusbaum C.,et al.Nature 439:331-335(2006).

Yamada S.,et al.Oncogene 23:5901-5911(2004).

Ota T.,et al.Nat. Genet. 36:40-45(2004).

Richter K.,et al.J. Biol. Chem. 284:30652-30661(2009).

Images



All lanes : Anti-NUGGC Antibody (Center) at 1:2000 dilution
Lane 1: HeLa whole cell lysate
Lane 2: HepG2 whole cell lysate
Lane 3: PANC-1 whole cell lysate
Lane 4: Raji whole cell lysate
Lane 5: Ramos whole cell lysate
Lysates/proteins at 20 µg per lane. Secondary Goat Anti-Rabbit IgG, (H+L), Peroxidase conjugated at 1/10000 dilution. Predicted band size : 91 kDa
Blocking/Dilution buffer: 5% NFDM/TBST.

Please note: All products are 'FOR RESEARCH USE ONLY. NOT FOR USE IN DIAGNOSTIC OR THERAPEUTIC PROCEDURES'.