

CHTF8 Antibody (N-Term)

Purified Rabbit Polyclonal Antibody (Pab)

Catalog # AP21876a

Product Information

Application	WB, E
Primary Accession	P0CG12
Reactivity	Human, Rat, Mouse
Host	Rabbit
Clonality	polyclonal
Isotype	Rabbit IgG
Clone Names	RB54215
Calculated MW	51391

Additional Information

Gene ID	113455421
Other Names	Chromosome transmission fidelity protein 8 homolog isoform 2, Decreased expression in renal and prostate cancer protein, CHTF8, DERP
Target/Specificity	This CHTF8 antibody is generated from a rabbit immunized with a KLH conjugated synthetic peptide between 2-33 amino acids from human CHTF8.
Dilution	WB~1:2000 E~Use at an assay dependent concentration.
Format	Purified polyclonal antibody supplied in PBS with 0.09% (W/V) sodium azide. This antibody is purified through a protein A column, followed by peptide affinity purification.
Storage	Maintain refrigerated at 2-8°C for up to 2 weeks. For long term storage store at -20°C in small aliquots to prevent freeze-thaw cycles.
Precautions	CHTF8 Antibody (N-Term) is for research use only and not for use in diagnostic or therapeutic procedures.

Protein Information

Name	DERP (HGNC:54084)
Function	Potential tumor suppressor. Inhibits prostate tumor cell growth, when overexpressed.
Cellular Location	Nucleus.
Tissue Location	Ubiquitously expressed, with abundant expression in kidney, skeletal muscle,

testis, liver, ovary, and heart and moderate expression in prostate. Expression is significantly reduced in renal and prostate tumors. No differential expression in breast cancer cells, between lobular carcinoma and normal lobules

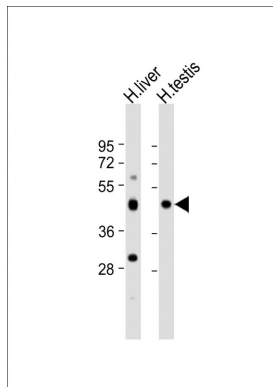
Background

Potential tumor suppressor. Inhibits prostate tumor cell growth, when overexpressed.

References

- Bechtel S.,et al.BMC Genomics 8:399-399(2007).
Martin J.,et al.Nature 432:988-994(2004).
Mural R.J.,et al.Submitted (JUL-2005) to the EMBL/GenBank/DDBJ databases.
Sun M.,et al.Mol. Med. 8:655-663(2002).
Green A.R.,et al.Breast Cancer Res. Treat. 113:59-66(2009).

Images



All lanes : Anti-CHTF8 Antibody (N-Term) at 1:2000 dilution
Lane 1: human liver lysate
Lane 2: human testis lysate
Lysates/proteins at 20 µg per lane. Secondary Goat Anti-Rabbit IgG, (H+L), Peroxidase conjugated at 1/10000 dilution. Predicted band size : 51 kDa
Blocking/Dilution buffer: 5% NFDM/TBST.

Please note: All products are 'FOR RESEARCH USE ONLY. NOT FOR USE IN DIAGNOSTIC OR THERAPEUTIC PROCEDURES'.