

LPP Antibody (N-Term)

Purified Rabbit Polyclonal Antibody (Pab)

Catalog # AP21880a

Product Information

Application	WB, E
Primary Accession	Q93052
Other Accession	Q8BFW7 , Q5XI07
Reactivity	Human, Mouse
Predicted	Mouse, Rat
Host	Rabbit
Clonality	polyclonal
Isotype	Rabbit IgG
Clone Names	RB54229
Calculated MW	65746

Additional Information

Gene ID	4026
Other Names	Lipoma-preferred partner, LIM domain-containing preferred translocation partner in lipoma, LPP
Target/Specificity	This LPP antibody is generated from a rabbit immunized with a KLH conjugated synthetic peptide between 32-66 amino acids from the human LPP.
Dilution	WB~~1:2000 E~~Use at an assay dependent concentration.
Format	Purified polyclonal antibody supplied in PBS with 0.09% (W/V) sodium azide. This antibody is purified through a protein A column, followed by peptide affinity purification.
Storage	Maintain refrigerated at 2-8°C for up to 2 weeks. For long term storage store at -20°C in small aliquots to prevent freeze-thaw cycles.
Precautions	LPP Antibody (N-Term) is for research use only and not for use in diagnostic or therapeutic procedures.

Protein Information

Name	LPP
Function	May play a structural role at sites of cell adhesion in maintaining cell shape and motility. In addition to these structural functions, it may also be implicated in signaling events and activation of gene transcription. May be

involved in signal transduction from cell adhesion sites to the nucleus allowing successful integration of signals arising from soluble factors and cell-cell adhesion sites. Also suggested to serve as a scaffold protein upon which distinct protein complexes are assembled in the cytoplasm and in the nucleus.

Cellular Location

Nucleus. Cytoplasm. Cell junction. Cell membrane. Note=Found in the nucleus, in the cytoplasm and at cell adhesion sites Shuttles between the cytoplasm and the nucleus. It has been found in sites of cell adhesion such as cell-to-cell contact and focal adhesion which are membrane attachment sites of cells to the extracellular matrix. Mainly nuclear when fused with HMGA2/HMGIC and KMT2A/MLL1

Tissue Location

Expressed in a wide variety of tissues but no or very low expression in brain and peripheral leukocytes

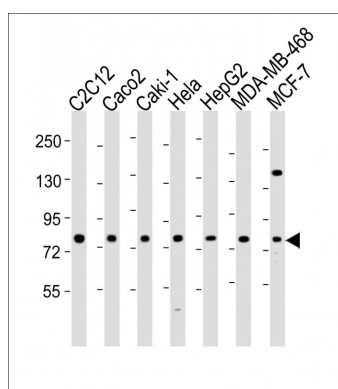
Background

May play a structural role at sites of cell adhesion in maintaining cell shape and motility. In addition to these structural functions, it may also be implicated in signaling events and activation of gene transcription. May be involved in signal transduction from cell adhesion sites to the nucleus allowing successful integration of signals arising from soluble factors and cell-cell adhesion sites. Also suggested to serve as a scaffold protein upon which distinct protein complexes are assembled in the cytoplasm and in the nucleus.

References

Petit M.M.R.,et al.Genomics 36:118-129(1996).
Ebert L.,et al.Submitted (JUN-2004) to the EMBL/GenBank/DDBJ databases.
Mural R.J.,et al.Submitted (SEP-2005) to the EMBL/GenBank/DDBJ databases.
Lemke I.,et al.Cytogenet. Cell Genet. 95:153-156(2001).
Petit M.M.,et al.Cancer Genet. Cytogenet. 106:18-23(1998).

Images



All lanes : Anti-LPP Antibody (N-Term) at 1:2000 dilution
Lane 1: C2C12 whole cell lysate Lane 2: Caco2 whole cell lysate Lane 3: Caki-1 whole cell lysate Lane 4: Hela whole cell lysate Lane 5: HepG2 whole cell lysate Lane 6: MDA-MB-468 whole cell lysate Lane 7: MCF-7 whole cell lysate Lysates/proteins at 20 µg per lane. Secondary Goat Anti-Rabbit IgG, (H+L), Peroxidase conjugated at 1/10000 dilution. Predicted band size : 66 kDa Blocking/Dilution buffer: 5% NFDM/TBST.

Please note: All products are 'FOR RESEARCH USE ONLY. NOT FOR USE IN DIAGNOSTIC OR THERAPEUTIC PROCEDURES'.