

FGFR1OP Antibody (Center)

Purified Rabbit Polyclonal Antibody (Pab)
Catalog # AP21889c

Product Information

Application	WB, E
Primary Accession	O95684
Other Accession	Q4R7V3
Reactivity	Human
Host	Rabbit
Clonality	polyclonal
Isotype	Rabbit IgG
Clone Names	RB53932
Calculated MW	43065

Additional Information

Gene ID	11116
Other Names	FGFR1 oncogene partner, FGFR1OP, FOP
Target/Specificity	This FGFR1OP antibody is generated from a rabbit immunized with a KLH conjugated synthetic peptide between 183-214 amino acids from the Central region of human FGFR1OP.
Dilution	WB~~1:1000-1:2000 E~~Use at an assay dependent concentration.
Format	Purified polyclonal antibody supplied in PBS with 0.09% (W/V) sodium azide. This antibody is purified through a protein A column, followed by peptide affinity purification.
Storage	Maintain refrigerated at 2-8°C for up to 2 weeks. For long term storage store at -20°C in small aliquots to prevent freeze-thaw cycles.
Precautions	FGFR1OP Antibody (Center) is for research use only and not for use in diagnostic or therapeutic procedures.

Protein Information

Name	CEP43 (HGNC:17012)
Synonyms	FGFR1OP, FOP
Function	Required for anchoring microtubules to the centrosomes (PubMed: 16314388 , PubMed: 28659385). Required for ciliation (PubMed: 28625565 , PubMed: 28659385).

Cellular Location

Cytoplasm, cytoskeleton, microtubule organizing center, centrosome. Cytoplasm, cytoskeleton, microtubule organizing center, centrosome, centriole. Cytoplasm, cytoskeleton, cilium basal body. Note=Associated with gamma-tubulin (PubMed:16314388). Localizes on both mother and daughter centrioles (PubMed:28428259, PubMed:28625565). Localizes to an axial position on the mother centriole (PubMed:28625565). Localizes to the distal end of the centriole partly on the subdistal appendage region (PubMed:28659385).

Tissue Location

Ubiquitous. Highly expressed in heart, liver, muscle, kidney, intestine, colon, adrenal gland, prostate, testis, and pancreas.

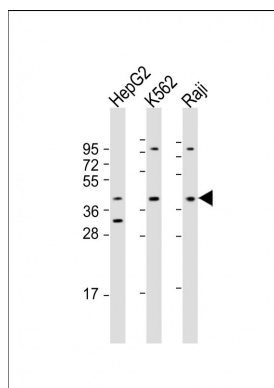
Background

Required for anchoring microtubules to the centrosomes.

References

- Popovici C., et al. Blood 93:1381-1389(1999).
Ota T., et al. Nat. Genet. 36:40-45(2004).
Mungall A.J., et al. Nature 425:805-811(2003).
Mural R.J., et al. Submitted (SEP-2005) to the EMBL/GenBank/DBJ databases.
Andersen J.S., et al. Nature 426:570-574(2003).

Images



All lanes : Anti-FGFR1OP Antibody (Center) at 1:1000-1:2000 dilution Lane 1: HepG2 whole cell lysate Lane 2: K562 whole cell lysate Lane 3: Raji whole cell lysate Lysates/proteins at 20 µg per lane. Secondary Goat Anti-Rabbit IgG, (H+L), Peroxidase conjugated at 1/10000 dilution. Predicted band size : 43 kDa Blocking/Dilution buffer: 5% NFDM/TBST.

Please note: All products are 'FOR RESEARCH USE ONLY. NOT FOR USE IN DIAGNOSTIC OR THERAPEUTIC PROCEDURES'.