

PGM1 Antibody (Center)

Purified Rabbit Polyclonal Antibody (Pab)

Catalog # AP21905c

Product Information

Application	WB, IHC-P, E
Primary Accession	P36871
Other Accession	Q4R5E4 , Q9D0F9 , P00949 , P38652
Reactivity	Human, Rat, Mouse
Predicted	Mouse, Rat
Host	Rabbit
Clonality	polyclonal
Isotype	Rabbit IgG
Clone Names	RB54238
Calculated MW	61449

Additional Information

Gene ID	5236
Other Names	Phosphoglucomutase-1, PGM 1, Glucose phosphomutase 1, PGM1
Target/Specificity	This PGM1 antibody is generated from a rabbit immunized with a KLH conjugated synthetic peptide between 251-282 amino acids from the Central region of human PGM1.
Dilution	WB~~1:2000 IHC-P~~1:100~500 E~~Use at an assay dependent concentration.
Format	Purified polyclonal antibody supplied in PBS with 0.09% (W/V) sodium azide. This antibody is purified through a protein A column, followed by peptide affinity purification.
Storage	Maintain refrigerated at 2-8°C for up to 2 weeks. For long term storage store at -20°C in small aliquots to prevent freeze-thaw cycles.
Precautions	PGM1 Antibody (Center) is for research use only and not for use in diagnostic or therapeutic procedures.

Protein Information

Name	PGM1
Function	Catalyzes the reversible isomerization of alpha-D-glucose 1- phosphate to alpha-D-glucose 6-phosphate (PubMed: 15378030 , PubMed: 25288802). The mechanism proceeds via the intermediate compound alpha-D-glucose 1,6-bisphosphate (Probable) (PubMed: 25288802). This enzyme participates in

both the breakdown and synthesis of glucose (PubMed:[17924679](#), PubMed:[25288802](#)).

Cellular Location

[Isoform 1]: Cytoplasm.

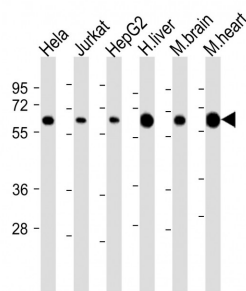
Background

This enzyme participates in both the breakdown and synthesis of glucose.

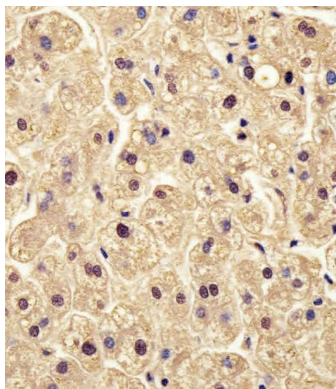
References

Whitehouse D.B.,et al.Proc. Natl. Acad. Sci. U.S.A. 89:411-415(1992).
Kalnine N.,et al.Submitted (MAY-2003) to the EMBL/GenBank/DDBJ databases.
Ota T.,et al.Nat. Genet. 36:40-45(2004).
Gregory S.G.,et al.Nature 441:315-321(2006).
Putt W.,et al.Biochem. J. 296:417-422(1993).

Images



All lanes : Anti-PGM1 Antibody (Center) at 1:2000 dilution
Lane 1: HeLa whole cell lysate Lane 2: Jurkat whole cell lysate Lane 3: HepG2 whole cell lysate Lane 4: human liver lysate Lane 5: mouse brain lysate Lane 6: mouse heart lysate Lysates/proteins at 20 µg per lane. Secondary Goat Anti-Rabbit IgG, (H+L), Peroxidase conjugated at 1/10000 dilution. Predicted band size : 61 kDa
Blocking/Dilution buffer: 5% NFDM/TBST.



AP21905c staining PGM1 in human liver tissue sections by Immunohistochemistry (IHC-P - paraformaldehyde-fixed, paraffin-embedded sections). Tissue was fixed with formaldehyde and blocked with 3% BSA for 0.5 hour at room temperature; antigen retrieval was by heat mediation with a citrate buffer (pH6). Samples were incubated with primary antibody (1/25) for 1 hours at 37°C. A undiluted biotinylated goat polyvalent antibody was used as the secondary antibody.

Please note: All products are 'FOR RESEARCH USE ONLY. NOT FOR USE IN DIAGNOSTIC OR THERAPEUTIC PROCEDURES'.