

# SKI Antibody (N-Term)

Purified Rabbit Polyclonal Antibody (Pab)

Catalog # AP21908a

## Product Information

---

<b>Application</b>	WB, E
<b>Primary Accession</b>	<a href="#">P12755</a>
<b>Other Accession</b>	<a href="#">Q9TUG2</a>
<b>Reactivity</b>	Human, Mouse
<b>Predicted</b>	Horse
<b>Host</b>	Rabbit
<b>Clonality</b>	polyclonal
<b>Isotype</b>	Rabbit IgG
<b>Clone Names</b>	RB54389
<b>Calculated MW</b>	80005

## Additional Information

---

<b>Gene ID</b>	6497
<b>Other Names</b>	Ski oncogene, Proto-oncogene c-Ski, SKI
<b>Target/Specificity</b>	This SKI antibody is generated from a rabbit immunized with a KLH conjugated synthetic peptide between 21-54 amino acids from human SKI.
<b>Dilution</b>	WB~~1:2000 E~~Use at an assay dependent concentration.
<b>Format</b>	Purified polyclonal antibody supplied in PBS with 0.09% (W/V) sodium azide. This antibody is purified through a protein A column, followed by peptide affinity purification.
<b>Storage</b>	Maintain refrigerated at 2-8°C for up to 2 weeks. For long term storage store at -20°C in small aliquots to prevent freeze-thaw cycles.
<b>Precautions</b>	SKI Antibody (N-Term) is for research use only and not for use in diagnostic or therapeutic procedures.

## Protein Information

---

<b>Name</b>	SKI
<b>Function</b>	May play a role in terminal differentiation of skeletal muscle cells but not in the determination of cells to the myogenic lineage. Functions as a repressor of TGF-beta signaling.
<b>Cellular Location</b>	Nucleus.

## Background

---

May play a role in terminal differentiation of skeletal muscle cells but not in the determination of cells to the myogenic lineage. Functions as a repressor of TGF-beta signaling.

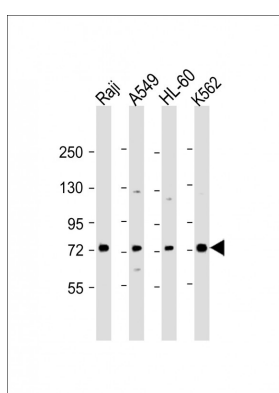
## References

---

Nomura N.,et al.Nucleic Acids Res. 17:5489-5500(1989).  
Gregory S.G.,et al.Nature 441:315-321(2006).  
Harada J.,et al.J. Biol. Chem. 278:38998-39005(2003).  
Gauci S.,et al.Anal. Chem. 81:4493-4501(2009).  
Takahata M.,et al.J. Biol. Chem. 284:3334-3344(2009).

## Images

---



All lanes : Anti-SKI Antibody (N-Term) at 1:2000 dilution  
Lane 1: Raji whole cell lysate Lane 2: A549 whole cell lysate Lane 3: HL-60 whole cell lysate Lane 4: K562 whole cell lysate Lysates/proteins at 20 µg per lane. Secondary Goat Anti-Rabbit IgG, (H+L), Peroxidase conjugated at 1/10000 dilution. Predicted band size : 80 kDa  
Blocking/Dilution buffer: 5% NFDM/TBST.

Please note: All products are 'FOR RESEARCH USE ONLY. NOT FOR USE IN DIAGNOSTIC OR THERAPEUTIC PROCEDURES'.