

TMED4 Antibody (C-Term)

Purified Rabbit Polyclonal Antibody (Pab)

Catalog # AP21909b

Product Information

Application	WB, E
Primary Accession	Q7Z7H5
Other Accession	Q8R1V4 , Q3T133 , Q9BVK6 , Q99KF1 , Q5I0E7 , B3MTS8 , B3NZM5 , B4JG34 , Q9I7K5 , B4KB41 , B4GMC3 , Q295B2 , B4HJV5 , B4QWH9 , B4LYB8 , B4NKL0 , B4PVC6
Reactivity	Human, Mouse
Predicted	Bovine, Human, Mouse, Rat
Host	Rabbit
Clonality	polyclonal
Isotype	Rabbit IgG
Clone Names	RB54261
Calculated MW	25943

Additional Information

Gene ID	222068
Other Names	Transmembrane emp24 domain-containing protein 4, Endoplasmic reticulum stress-response protein 25, ERS25, GMP25iso, Putative NF-kappa-B-activating protein 156, p24 family protein alpha-3, p24alpha3, TMED4, ERS25
Target/Specificity	This TMED4 antibody is generated from a rabbit immunized with a KLH conjugated synthetic peptide between 195-225 amino acids from human TMED4.
Dilution	WB~~1:2000 E~~Use at an assay dependent concentration.
Format	Purified polyclonal antibody supplied in PBS with 0.09% (W/V) sodium azide. This antibody is purified through a protein A column, followed by peptide affinity purification.
Storage	Maintain refrigerated at 2-8°C for up to 2 weeks. For long term storage store at -20°C in small aliquots to prevent freeze-thaw cycles.
Precautions	TMED4 Antibody (C-Term) is for research use only and not for use in diagnostic or therapeutic procedures.

Protein Information

Name	TMED4
-------------	-------

Synonyms	ERS25
Function	Involved in vesicular protein trafficking, mainly in the early secretory pathway. targeting. Involved in the maintenance of the Golgi apparatus. Appears to play a role in the biosynthesis of secreted cargo including processing. Involved in endoplasmic reticulum stress response. May play a role in the regulation of heat-shock response and apoptosis (By similarity).
Cellular Location	Endoplasmic reticulum membrane; Single-pass type I membrane protein

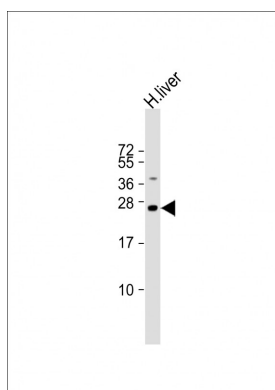
Background

Involved in vesicular protein trafficking, mainly in the early secretory pathway. targeting. Involved in the maintenance of the Golgi apparatus. Appears to play a role in the biosynthesis of secreted cargo including processing. Involved in endoplasmic reticulum stress response. May play a role in the regulation of heat-shock response and apoptosis (By similarity).

References

Ota T.,et al.Nat. Genet. 36:40-45(2004).
 Bechtel S.,et al.BMC Genomics 8:399-399(2007).
 Scherer S.W.,et al.Science 300:767-772(2003).
 Mural R.J.,et al.Submitted (SEP-2005) to the EMBL/GenBank/DDBJ databases.
 Kim J.W.,et al.Submitted (DEC-2002) to the EMBL/GenBank/DDBJ databases.

Images



Anti-TMED4 Antibody (C-Term) at 1:2000 dilution + human liver lysate Lysates/proteins at 20 µg per lane. Secondary Goat Anti-Rabbit IgG, (H+L), Peroxidase conjugated at 1/10000 dilution. Predicted band size : 26 kDa Blocking/Dilution buffer: 5% NFDM/TBST.

Please note: All products are 'FOR RESEARCH USE ONLY. NOT FOR USE IN DIAGNOSTIC OR THERAPEUTIC PROCEDURES'.