

DNASE1L2 Antibody (C-Term)

Purified Rabbit Polyclonal Antibody (Pab)

Catalog # AP21923b

Product Information

Application	WB, E
Primary Accession	Q92874
Reactivity	Human, Mouse
Host	Rabbit
Clonality	polyclonal
Isotype	Rabbit IgG
Clone Names	RB55364
Calculated MW	32853

Additional Information

Gene ID	1775
Other Names	Deoxyribonuclease-1-like 2, 3.1.21.-, DNase I homolog protein DHP1, Deoxyribonuclease I-like 2, DNase I-like 2, DNASE1L2, DHP1, DNAS1L2
Target/Specificity	This DNASE1L2 antibody is generated from a rabbit immunized with a KLH conjugated synthetic peptide between 199-229 amino acids from human DNASE1L2.
Dilution	WB~~1:2000 E~~Use at an assay dependent concentration.
Format	Purified polyclonal antibody supplied in PBS with 0.09% (W/V) sodium azide. This antibody is purified through a protein A column, followed by peptide affinity purification.
Storage	Maintain refrigerated at 2-8°C for up to 2 weeks. For long term storage store at -20°C in small aliquots to prevent freeze-thaw cycles.
Precautions	DNASE1L2 Antibody (C-Term) is for research use only and not for use in diagnostic or therapeutic procedures.

Protein Information

Name	DNASE1L2
Synonyms	DHP1, DNAS1L2
Function	Divalent cation-dependent acid DNA endonuclease involved in the breakdown of the nucleus during corneocyte formation of epidermal keratinocytes. May play an immune role by eliminating harmful DNA released

into the extracellular environment by damaged epidermal cells.

Cellular Location

Cytoplasm. Secreted

Tissue Location

Preferentially expressed in the skin and up-regulated during keratinocytes differentiation. Highly abundant (at protein level) in the stratum granulosum

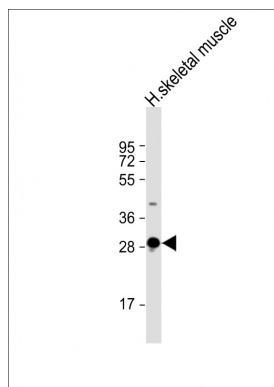
Background

Divalent cation-dependent acid DNA endonuclease involved in the breakdown of the nucleus during corneocyte formation of epidermal keratinocytes. May play an immune role by eliminating harmful DNA released into the extracellular environment by damaged epidermal cells.

References

Rodriguez A.M.,et al.Genomics 42:507-513(1997).
Shiokawa D.,et al.Genomics 84:95-105(2004).
Ota T.,et al.Nat. Genet. 36:40-45(2004).
Martin J.,et al.Nature 432:988-994(2004).
Mural R.J.,et al.Submitted (SEP-2005) to the EMBL/GenBank/DDBJ databases.

Images



Anti-DNASE1L2 Antibody (C-Term) at 1:2000 dilution + human skeletal muscle lysate Lysates/proteins at 20 µg per lane. Secondary Goat Anti-Rabbit IgG, (H+L), Peroxidase conjugated at 1/10000 dilution. Predicted band size : 33 kDa Blocking/Dilution buffer: 5% NFDM/TBST.

Please note: All products are 'FOR RESEARCH USE ONLY. NOT FOR USE IN DIAGNOSTIC OR THERAPEUTIC PROCEDURES'.