

EFS Antibody (Center)

Purified Rabbit Polyclonal Antibody (Pab)

Catalog # AP21926c

Product Information

Application	WB, E
Primary Accession	O43281
Reactivity	Human
Host	Rabbit
Clonality	polyclonal
Isotype	Rabbit IgG
Clone Names	RB54269
Calculated MW	58815

Additional Information

Gene ID	10278
Other Names	Embryonal Fyn-associated substrate, hEFS, Cas scaffolding protein family member 3, EFS, CASS3
Target/Specificity	This EFS antibody is generated from a rabbit immunized with a KLH conjugated synthetic peptide between 367-399 amino acids from the Central region of human EFS.
Dilution	WB~~1:1000-1:2000 E~~Use at an assay dependent concentration.
Format	Purified polyclonal antibody supplied in PBS with 0.09% (W/V) sodium azide. This antibody is purified through a protein A column, followed by peptide affinity purification.
Storage	Maintain refrigerated at 2-8°C for up to 2 weeks. For long term storage store at -20°C in small aliquots to prevent freeze-thaw cycles.
Precautions	EFS Antibody (Center) is for research use only and not for use in diagnostic or therapeutic procedures.

Protein Information

Name	EFS
Synonyms	CASS3
Function	Docking protein which plays a central coordinating role for tyrosine-kinase-based signaling related to cell adhesion. May serve as an activator of SRC and a downstream effector. Interacts with the SH3 domain of

FYN and with CRK, SRC, and YES (By similarity).

Tissue Location

The protein has been detected in lung and placenta.

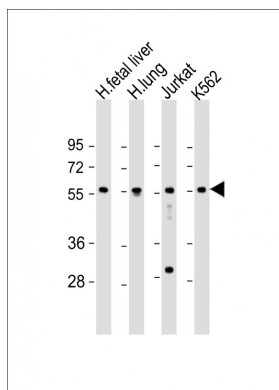
Background

Docking protein which plays a central coordinating role for tyrosine-kinase-based signaling related to cell adhesion. May serve as an activator of SRC and a downstream effector. Interacts with the SH3 domain of FYN and with CRK, SRC, and YES (By similarity).

References

Ishino M.,et al.Oncogene 15:1741-1745(1997).
Ota T.,et al.Nat. Genet. 36:40-45(2004).
Heilig R.,et al.Nature 421:601-607(2003).
Mural R.J.,et al.Submitted (SEP-2005) to the EMBL/GenBank/DDBJ databases.
Sjoeblom T.,et al.Science 314:268-274(2006).

Images



All lanes : Anti-EFS Antibody (Center) at 1:1000-1:2000 dilution Lane 1: human fetal liver lysate Lane 2: human lung lysate Lane 3: Jurkat whole cell lysate Lane 4: K562 whole cell lysate Lysates/proteins at 20 µg per lane. Secondary Goat Anti-Rabbit IgG, (H+L), Peroxidase conjugated at 1/10000 dilution. Predicted band size : 59 kDa Blocking/Dilution buffer: 5% NFDM/TBST.

Please note: All products are 'FOR RESEARCH USE ONLY. NOT FOR USE IN DIAGNOSTIC OR THERAPEUTIC PROCEDURES'.