

# RPL14 Antibody (Center)

Purified Rabbit Polyclonal Antibody (Pab)

Catalog # AP21927c

## Product Information

---

Application	WB, IF, FC, E
Primary Accession	<a href="#">P50914</a>
Reactivity	Human
Host	Rabbit
Clonality	polyclonal
Isotype	Rabbit IgG
Clone Names	RB55360
Calculated MW	23432

## Additional Information

---

Gene ID	9045
Other Names	60S ribosomal protein L14, CAG-ISL 7, RPL14
Target/Specificity	This RPL14 antibody is generated from a rabbit immunized with a KLH conjugated synthetic peptide between 117-147 amino acids from the Central region of human RPL14.
Dilution	WB~~1:2000 IF~~1:25 FC~~1:25 E~~Use at an assay dependent concentration.
Format	Purified polyclonal antibody supplied in PBS with 0.09% (W/V) sodium azide. This antibody is purified through a protein A column, followed by peptide affinity purification.
Storage	Maintain refrigerated at 2-8°C for up to 2 weeks. For long term storage store at -20°C in small aliquots to prevent freeze-thaw cycles.
Precautions	RPL14 Antibody (Center) is for research use only and not for use in diagnostic or therapeutic procedures.

## Protein Information

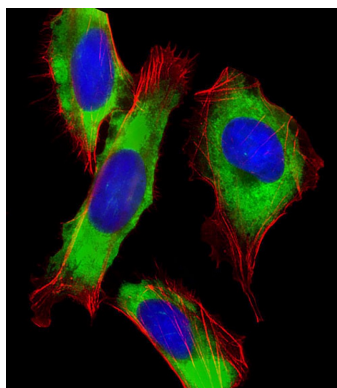
---

Name	RPL14
Function	Component of the large ribosomal subunit (PubMed: <a href="#">12962325</a> , PubMed: <a href="#">23636399</a> , PubMed: <a href="#">32669547</a> ). The ribosome is a large ribonucleoprotein complex responsible for the synthesis of proteins in the cell (PubMed: <a href="#">12962325</a> , PubMed: <a href="#">23636399</a> , PubMed: <a href="#">32669547</a> ).
Cellular Location	Cytoplasm.

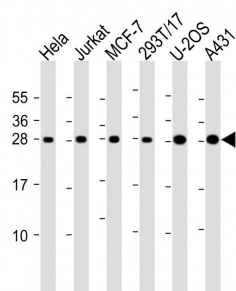
## References

Aoki M.,et al.Diabetes 45:157-164(1996).  
Tanaka M.,et al.Biochem. Biophys. Res. Commun. 243:531-537(1998).  
Yoshihama M.,et al.Genome Res. 12:379-390(2002).  
Lin L.,et al.Submitted (JUL-2005) to the EMBL/GenBank/DDBJ databases.  
Suzuki Y.,et al.Submitted (APR-2005) to the EMBL/GenBank/DDBJ databases.

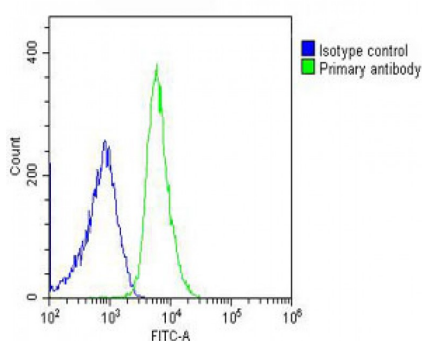
## Images



Immunofluorescent analysis of 4% paraformaldehyde-fixed, 0.1% Triton X-100 permeabilized U-2 OS (human osteosarcoma cell line) cells labeling RPL14 with AP21927c at 1/25 dilution, followed by Dylight® 488-conjugated goat anti-rabbit IgG (NK179883) secondary antibody at 1/200 dilution (green). Immunofluorescence image showing cytoplasm staining on U-2 OS cell line. Cytoplasmic actin is detected with Dylight® 554 Phalloidin (PD18466410) at 1/100 dilution (red).The nuclear counter stain is DAPI (blue).



All lanes : Anti-RPL14 Antibody (Center) at 1:2000 dilution  
Lane 1: HeLa whole cell lysate Lane 2: Jurkat whole cell lysate Lane 3: MCF-7 whole cell lysate Lane 4: 293T/17 whole cell lysate Lane 5: U-2OS whole cell lysate Lane 6: A431 whole cell lysate Lysates/proteins at 20 µg per lane. Secondary Goat Anti-Rabbit IgG, (H+L), Peroxidase conjugated at 1/10000 dilution. Predicted band size : 23 kDa Blocking/Dilution buffer: 5% NFDM/TBST.



Overlay histogram showing U-2OS cells stained with AP21927c (green line). The cells were fixed with 2% paraformaldehyde (10 min) and then permeabilized with 90% methanol for 10 min. The cells were then incubated in 2% bovine serum albumin to block non-specific protein-protein interactions followed by the antibody (AP21927c, 1:25 dilution) for 60 min at 37°C. The secondary antibody used was Goat-Anti-Rabbit IgG, DyLight® 488 Conjugated Highly Cross-Adsorbed(OH191631) at 1/200 dilution for 40 min at 37°C. Isotype control antibody (blue line) was rabbit IgG (1µg/1x10<sup>6</sup> cells) used under the same conditions. Acquisition of >10, 000 events was performed.

Please note: All products are 'FOR RESEARCH USE ONLY. NOT FOR USE IN DIAGNOSTIC OR THERAPEUTIC PROCEDURES'.