

SAPCD2 Antibody (C-Term)

Purified Rabbit Polyclonal Antibody (Pab)

Catalog # AP21936b

Product Information

Application	WB, E
Primary Accession	Q86UD0
Reactivity	Human, Mouse
Host	Rabbit
Clonality	polyclonal
Isotype	Rabbit IgG
Clone Names	RB54325
Calculated MW	42637

Additional Information

Gene ID	89958
Other Names	Suppressor APC domain-containing protein 2, Tumor specificity and mitosis phase-dependent expression protein, TS/MDEP, p42.3, SAPCD2, C9orf140
Target/Specificity	This SAPCD2 antibody is generated from a rabbit immunized with a KLH conjugated synthetic peptide between 333-367 amino acids from human SAPCD2.
Dilution	WB~~1:2000 E~~Use at an assay dependent concentration.
Format	Purified polyclonal antibody supplied in PBS with 0.09% (W/V) sodium azide. This antibody is purified through a protein A column, followed by peptide affinity purification.
Storage	Maintain refrigerated at 2-8°C for up to 2 weeks. For long term storage store at -20°C in small aliquots to prevent freeze-thaw cycles.
Precautions	SAPCD2 Antibody (C-Term) is for research use only and not for use in diagnostic or therapeutic procedures.

Protein Information

Name	SAPCD2 (HGNC:28055)
Synonyms	C9orf140
Function	Plays a role in planar mitotic spindle orientation in retinal progenitor cells (RPCs) and promotes the production of symmetric terminal divisions (By similarity). Negatively regulates the mitotic apical cortex localization of GPSM2

(PubMed:[26766442](#)). Involved also in positive regulation of cell proliferation and tumor cell growth (PubMed:[23576022](#), PubMed:[23704824](#)).

Cellular Location

Cytoplasm. Nucleus. Cytoplasm, cell cortex. Apical cell membrane {ECO:0000250|UniProtKB:Q9D818}. Cell junction, tight junction. Note=Localized at the apical cortical region during the M phase. In horizontally retinal progenitor dividing cells, localized at the pole cortical region from prophase to telophase cells. In vertically retinal progenitor dividing cells, not detected at the pole cortical region at any stage of mitosis {ECO:0000250|UniProtKB:Q9D818}

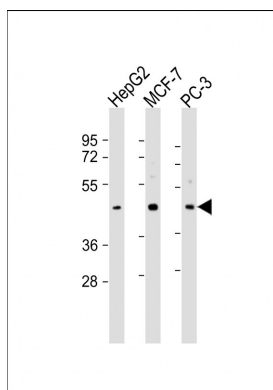
Tissue Location

Expressed in 5-month-old fetal tissues, including stomach, intestine, colon, liver, brain, lung, heart, spleen and kidney (PubMed:17525738). Undetectable in non-cancerous adult tissues (PubMed:17525738). Expressed in many primary gastric carcinoma, but almost not in adjacent normal mucosa (PubMed:17525738). Expressed preferentially in M and G1 phases, compared to S and G2 phases (PubMed:17525738). Expression is up-regulated in hepatocellular carcinoma (HCC) and colorectal cancer (CRC) tissues (at protein level) (PubMed:23704824).

References

Xu X.,et al.Oncogene 26:7371-7379(2007).
Humphray S.J.,et al.Nature 429:369-374(2004).

Images



All lanes : Anti-SAPCD2 Antibody (C-Term) at 1:2000 dilution
Lane 1: HepG2 whole cell lysate
Lane 2: MCF-7 whole cell lysate
Lane 3: PC-3 whole cell lysate
Lysates/proteins at 20 µg per lane. Secondary Goat Anti-Rabbit IgG, (H+L), Peroxidase conjugated at 1/10000 dilution. Predicted band size : 43 kDa
Blocking/Dilution buffer: 5% NFDM/TBST.

Please note: All products are 'FOR RESEARCH USE ONLY. NOT FOR USE IN DIAGNOSTIC OR THERAPEUTIC PROCEDURES'.