

COL4A3 Antibody (N-Term)

Purified Rabbit Polyclonal Antibody (Pab)

Catalog # AP21945a

Product Information

Application	WB, E
Primary Accession	Q01955
Reactivity	Human
Host	Rabbit
Clonality	polyclonal
Isotype	Rabbit IgG
Clone Names	RB54513
Calculated MW	161813

Additional Information

Gene ID	1285
Other Names	Collagen alpha-3(IV) chain, Goodpasture antigen, Tumstatin, COL4A3
Target/Specificity	This COL4A3 antibody is generated from a rabbit immunized with a KLH conjugated synthetic peptide between 141-173 amino acids from human COL4A3.
Dilution	WB~~1:1000 E~~Use at an assay dependent concentration.
Format	Purified polyclonal antibody supplied in PBS with 0.09% (W/V) sodium azide. This antibody is purified through a protein A column, followed by peptide affinity purification.
Storage	Maintain refrigerated at 2-8°C for up to 2 weeks. For long term storage store at -20°C in small aliquots to prevent freeze-thaw cycles.
Precautions	COL4A3 Antibody (N-Term) is for research use only and not for use in diagnostic or therapeutic procedures.

Protein Information

Name	COL4A3
Function	Type IV collagen is the major structural component of glomerular basement membranes (GBM), forming a 'chicken-wire' meshwork together with laminins, proteoglycans and entactin/nidogen.
Cellular Location	Secreted, extracellular space, extracellular matrix, basement membrane. Note=Colocalizes with COL4A4 and COL4A5 in GBM, tubular basement

membrane (TBM) and synaptic basal lamina (BL)

Tissue Location

Alpha 3 and alpha 4 type IV collagens are colocalized and present in kidney, eye, basement membranes of lens capsule, cochlea, lung, skeletal muscle, aorta, synaptic fibers, fetal kidney and fetal lung. PubMed:8083201 reports similar levels of expression of alpha 3 and alpha 4 type IV collagens in kidney, but PubMed:7523402 reports that in kidney levels of alpha 3 type IV collagen are significantly lower than those of alpha 4 type IV collagen. According to PubMed:8083201, alpha 3 type IV collagen is not detected in heart, brain, placenta, liver, pancreas, extrasynaptic muscle fibers, endoneurial and perineurial nerves, fetal brain, fetal heart and fetal liver. According to PubMed:7523402, alpha 3 type IV collagen is strongly expressed in pancreas, neuroretina and calvaria and not expressed in adrenal, ileum and skin. Isoform 1 and isoform 3 are strongly expressed in kidney, lung, suprarenal capsule, muscle and spleen, in each of these tissues isoform 1 is more abundant than isoform 3. Isoform 1 and isoform 3 are expressed at low levels in artery, fat, pericardium and peripheral nerve, but not in placenta, mesangium, skin, pleura and cultured umbilical endothelial cells

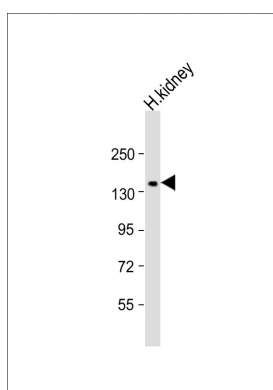
Background

Type IV collagen is the major structural component of glomerular basement membranes (GBM), forming a 'chicken-wire' meshwork together with laminins, proteoglycans and entactin/nidogen.

References

Mariyama M.,et al.J. Biol. Chem. 269:23013-23017(1994).
Leinonen A.,et al.Submitted (OCT-1998) to the EMBL/GenBank/DDBJ databases.
Heidet L.,et al.J. Am. Soc. Nephrol. 12:97-106(2001).
Hillier L.W.,et al.Nature 434:724-731(2005).
Momota R.,et al.FEBS Lett. 424:11-16(1998).

Images



Anti-COL4A3 Antibody (N-Term) at 1:1000 dilution + kidney lysate Lysates/proteins at 20 µg per lane. Secondary Goat Anti-Rabbit IgG, (H+L), Peroxidase conjugated at 1/10000 dilution. Predicted band size : 162 kDa Blocking/Dilution buffer: 5% NFDM/TBST.

Please note: All products are 'FOR RESEARCH USE ONLY. NOT FOR USE IN DIAGNOSTIC OR THERAPEUTIC PROCEDURES'.