

SCGB2A2 Antibody (N-Term)

Purified Rabbit Polyclonal Antibody (Pab)

Catalog # AP21959a

Product Information

Application	WB, E
Primary Accession	Q13296
Reactivity	Human
Host	Rabbit
Clonality	polyclonal
Isotype	Rabbit IgG
Clone Names	RB54142
Calculated MW	10499

Additional Information

Gene ID	4250
Other Names	Mammaglobin-A, Mammaglobin-1, Secretoglobin family 2A member 2, SCGB2A2, MGB1, UGB2
Target/Specificity	This SCGB2A2 antibody is generated from a rabbit immunized with a KLH conjugated synthetic peptide between 22-51 amino acids from human SCGB2A2.
Dilution	WB~~1:2000 E~~Use at an assay dependent concentration.
Format	Purified polyclonal antibody supplied in PBS with 0.09% (W/V) sodium azide. This antibody is purified through a protein A column, followed by peptide affinity purification.
Storage	Maintain refrigerated at 2-8°C for up to 2 weeks. For long term storage store at -20°C in small aliquots to prevent freeze-thaw cycles.
Precautions	SCGB2A2 Antibody (N-Term) is for research use only and not for use in diagnostic or therapeutic procedures.

Protein Information

Name	SCGB2A2
Synonyms	MGB1, UGB2
Cellular Location	Secreted.
Tissue Location	Mammary gland specific. Over-expressed in breast cancer

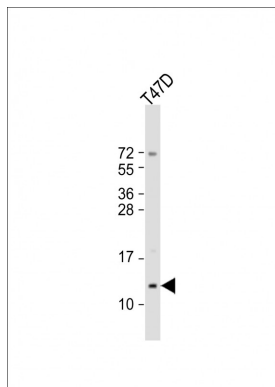
References

Watson M.A.,et al.Cancer Res. 56:860-865(1996).

Watson M.A.,et al.Oncogene 16:817-824(1998).

Zhao L.,et al.Submitted (JAN-2003) to the EMBL/GenBank/DDBJ databases.

Images



Anti-SCGB2A2 Antibody (N-Term) at 1:2000 dilution + T47D whole cell lysate Lysates/proteins at 20 µg per lane. Secondary Goat Anti-Rabbit IgG, (H+L), Peroxidase conjugated at 1/10000 dilution. Predicted band size : 10 kDa Blocking/Dilution buffer: 5% NFDM/TBST.

Please note: All products are 'FOR RESEARCH USE ONLY. NOT FOR USE IN DIAGNOSTIC OR THERAPEUTIC PROCEDURES'.