

# GHRL Antibody (N-Term)

Purified Rabbit Polyclonal Antibody (Pab)

Catalog # AP21965a

## Product Information

---

<b>Application</b>	WB, E
<b>Primary Accession</b>	<a href="#">Q9UBU3</a>
<b>Reactivity</b>	Human, Rat, Mouse
<b>Host</b>	Rabbit
<b>Clonality</b>	polyclonal
<b>Isotype</b>	Rabbit IgG
<b>Clone Names</b>	RB55263
<b>Calculated MW</b>	12911

## Additional Information

---

<b>Gene ID</b>	51738
<b>Other Names</b>	Appetite-regulating hormone, Growth hormone secretagogue, Growth hormone-releasing peptide, Motilin-related peptide, Protein M46, Ghrelin-27, Ghrelin-28, Ghrelin, Obestatin, GHRL, MTLRP
<b>Target/Specificity</b>	This GHRL antibody is generated from a rabbit immunized with a KLH conjugated synthetic peptide between 11-43 amino acids from human GHRL.
<b>Dilution</b>	WB~~1:2000 E~~Use at an assay dependent concentration.
<b>Format</b>	Purified polyclonal antibody supplied in PBS with 0.09% (W/V) sodium azide. This antibody is purified through a protein A column, followed by peptide affinity purification.
<b>Storage</b>	Maintain refrigerated at 2-8°C for up to 2 weeks. For long term storage store at -20°C in small aliquots to prevent freeze-thaw cycles.
<b>Precautions</b>	GHRL Antibody (N-Term) is for research use only and not for use in diagnostic or therapeutic procedures.

## Protein Information

---

<b>Name</b>	GHRL
<b>Synonyms</b>	MTLRP
<b>Function</b>	[Ghrelin-27]: Ghrelin is the ligand for growth hormone secretagogue receptor type 1 (GHSR) (PubMed: <a href="#">10604470</a> ). Induces the release of growth hormone from the pituitary (PubMed: <a href="#">10604470</a> ). Has an appetite-stimulating

effect, induces adiposity and stimulates gastric acid secretion. Involved in growth regulation.

**Cellular Location**

Secreted.

**Tissue Location**

Highest level in stomach. All forms are found in serum as well. Other tissues compensate for the loss of ghrelin synthesis in the stomach following gastrectomy

## Background

---

Ghrelin is the ligand for growth hormone secretagogue receptor type 1 (GHSR). Induces the release of growth hormone from the pituitary. Has an appetite-stimulating effect, induces adiposity and stimulates gastric acid secretion. Involved in growth regulation.

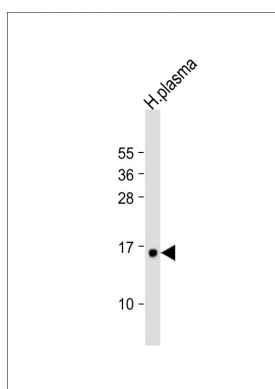
## References

---

Kojima M.,et al.Nature 402:656-660(1999).  
Tomasetto C.,et al.Gastroenterology 119:395-405(2000).  
Wajnrajch M.P.,et al.J. Endocr. Genet. 1:231-233(2000).  
Hosoda H.,et al.J. Biol. Chem. 278:64-70(2003).  
Seim I.,et al.BMC Genomics 8:298-298(2007).

## Images

---



Anti-GHRL Antibody (N-Term) at 1:2000 dilution + human plasma lysate Lysates/proteins at 20 µg per lane. Secondary Goat Anti-Rabbit IgG, (H+L), Peroxidase conjugated at 1/10000 dilution. Predicted band size : 13 kDa Blocking/Dilution buffer: 5% NFDM/TBST.

Please note: All products are 'FOR RESEARCH USE ONLY. NOT FOR USE IN DIAGNOSTIC OR THERAPEUTIC PROCEDURES'.