

PLK5 Antibody (Center)

Purified Rabbit Polyclonal Antibody (Pab)

Catalog # AP21966c

Product Information

Application	WB, E
Primary Accession	Q496M5
Reactivity	Human
Host	Rabbit
Clonality	polyclonal
Isotype	Rabbit IgG
Clone Names	RB54552
Calculated MW	36329

Additional Information

Gene ID	126520
Other Names	Inactive serine/threonine-protein kinase PLK5, Polo-like kinase 5, PLK-5, PLK5, PLK5P
Target/Specificity	This PLK5 antibody is generated from a rabbit immunized with a KLH conjugated synthetic peptide between 140-174 amino acids from the Central region of human PLK5.
Dilution	WB~~1:2000 E~~Use at an assay dependent concentration.
Format	Purified polyclonal antibody supplied in PBS with 0.09% (W/V) sodium azide. This antibody is purified through a protein A column, followed by peptide affinity purification.
Storage	Maintain refrigerated at 2-8°C for up to 2 weeks. For long term storage store at -20°C in small aliquots to prevent freeze-thaw cycles.
Precautions	PLK5 Antibody (Center) is for research use only and not for use in diagnostic or therapeutic procedures.

Protein Information

Name	PLK5
Synonyms	PLK5P
Function	Inactive serine/threonine-protein kinase that plays a role in cell cycle progression and neuronal differentiation.

Cellular Location	Nucleus, nucleolus. Cytoplasm
Tissue Location	Expressed in the brain, neurons and glial cells. Also expressed in highly differentiated cells, such as the serous acini in the parotid gland, distal and proximal tubules of the kidney, tubules of the seminal gland, Kupffer cells and some hepatocytes in the liver, and some cells in the germinal center of lymph nodes (at protein level).

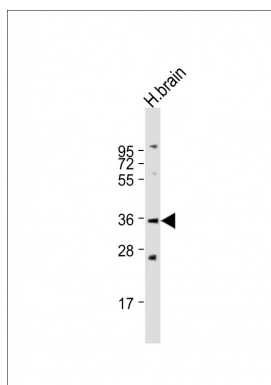
Background

Inactive serine/threonine-protein kinase that plays a role in cell cycle progression and neuronal differentiation.

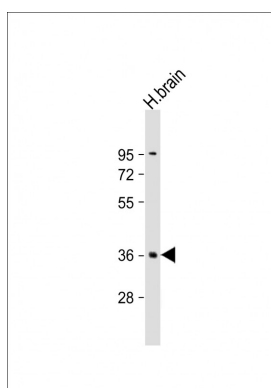
References

Ota T.,et al.Nat. Genet. 36:40-45(2004).
 Li H.,et al.Submitted (MAR-2006) to the EMBL/GenBank/DDBJ databases.
 Grimwood J.,et al.Nature 428:529-535(2004).
 de Carcer G.,et al.Mol. Cell. Biol. 31:1225-1239(2011).

Images



Anti-PLK5 Antibody (Center) at 1:2000 dilution + human brain lysate Lysates/proteins at 20 µg per lane. Secondary Goat Anti-Rabbit IgG, (H+L), Peroxidase conjugated at 1/10000 dilution. Predicted band size : 36 kDa
 Blocking/Dilution buffer: 5% NFDM/TBST.



Anti-PLK5 Antibody (Center) at 1:2000 dilution + human brain lysate Lysates/proteins at 20 µg per lane. Secondary Goat Anti-Rabbit IgG, (H+L), Peroxidase conjugated at 1/10000 dilution. Predicted band size : 36 kDa
 Blocking/Dilution buffer: 5% NFDM/TBST.

Please note: All products are 'FOR RESEARCH USE ONLY. NOT FOR USE IN DIAGNOSTIC OR THERAPEUTIC PROCEDURES'.