

PHF6 Antibody (Center)

Purified Rabbit Polyclonal Antibody (Pab)

Catalog # AP21974c

Product Information

| | |
|--------------------------|---|
| Application | WB, E |
| Primary Accession | Q8IWS0 |
| Other Accession | Q08DR0 , Q5R5Z2 |
| Reactivity | Human |
| Predicted | Bovine |
| Host | Rabbit |
| Clonality | polyclonal |
| Isotype | Rabbit IgG |
| Clone Names | RB54600 |
| Calculated MW | 41290 |

Additional Information

| | |
|---------------------------|--|
| Gene ID | 84295 |
| Other Names | PHD finger protein 6, PHD-like zinc finger protein, PHF6, CENP-31, KIAA1823 |
| Target/Specificity | This PHF6 antibody is generated from a rabbit immunized with a KLH conjugated synthetic peptide between 148-180 amino acids from the Central region of human PHF6. |
| Dilution | WB~~1:2000 E~~Use at an assay dependent concentration. |
| Format | Purified polyclonal antibody supplied in PBS with 0.09% (W/V) sodium azide. This antibody is purified through a protein A column, followed by peptide affinity purification. |
| Storage | Maintain refrigerated at 2-8°C for up to 2 weeks. For long term storage store at -20°C in small aliquots to prevent freeze-thaw cycles. |
| Precautions | PHF6 Antibody (Center) is for research use only and not for use in diagnostic or therapeutic procedures. |

Protein Information

| | |
|-----------------|---|
| Name | PHF6 |
| Synonyms | CENP-31, KIAA1823 |
| Function | Transcriptional regulator that associates with ribosomal RNA promoters and suppresses ribosomal RNA (rRNA) transcription. |

Cellular Location Nucleus. Nucleus, nucleolus. Chromosome, centromere, kinetochore.
Note=Nuclear, it particularly localizes to the nucleolus

Tissue Location Ubiquitously expressed.

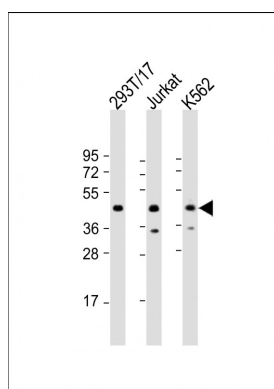
Background

Transcriptional regulator that associates with ribosomal RNA promoters and suppresses ribosomal RNA (rRNA) transcription.

References

Lower K.M.,et al.Nat. Genet. 32:661-665(2002).
Nagase T.,et al.DNA Res. 8:85-95(2001).
Ota T.,et al.Nat. Genet. 36:40-45(2004).
Ross M.T.,et al.Nature 434:325-337(2005).
Mural R.J.,et al.Submitted (SEP-2005) to the EMBL/GenBank/DDBJ databases.

Images



All lanes : Anti-PHF6 Antibody (Center) at 1:2000 dilution
Lane 1: 293T/17 whole cell lysate Lane 2: Jurkat whole cell lysate Lane 3: K562 whole cell lysate Lysates/proteins at 20 µg per lane. Secondary Goat Anti-Rabbit IgG, (H+L), Peroxidase conjugated at 1/10000 dilution. Predicted band size : 41 kDa Blocking/Dilution buffer: 5% NFDM/TBST.

Please note: All products are 'FOR RESEARCH USE ONLY. NOT FOR USE IN DIAGNOSTIC OR THERAPEUTIC PROCEDURES'.