

TPRA1 Antibody (N-Term)

Purified Rabbit Polyclonal Antibody (Pab)

Catalog # AP21977a

Product Information

Application	WB, FC, E
Primary Accession	Q86W33
Reactivity	Human, Rat, Mouse
Host	Rabbit
Clonality	polyclonal
Isotype	Rabbit IgG
Clone Names	RB55269
Calculated MW	41053

Additional Information

Gene ID	131601
Other Names	Transmembrane protein adipocyte-associated 1, Integral membrane protein GPR175, Transmembrane protein 227, TPRA1, GPR175, TMEM227
Target/Specificity	This TPRA1 antibody is generated from a rabbit immunized with a KLH conjugated synthetic peptide between 16-47 amino acids from human TPRA1.
Dilution	WB~~1:2000 FC~~1:25 E~~Use at an assay dependent concentration.
Format	Purified polyclonal antibody supplied in PBS with 0.09% (W/V) sodium azide. This antibody is purified through a protein A column, followed by peptide affinity purification.
Storage	Maintain refrigerated at 2-8°C for up to 2 weeks. For long term storage store at -20°C in small aliquots to prevent freeze-thaw cycles.
Precautions	TPRA1 Antibody (N-Term) is for research use only and not for use in diagnostic or therapeutic procedures.

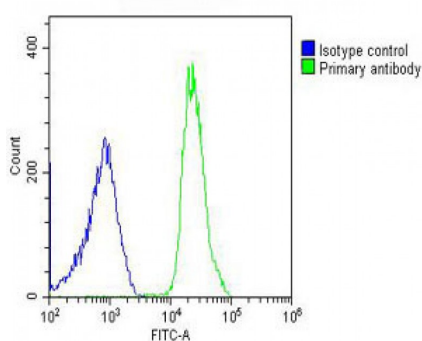
Protein Information

Name	TPRA1
Synonyms	GPR175, TMEM227
Cellular Location	Membrane; Multi-pass membrane protein.
Tissue Location	Ubiquitous, with higher levels in heart, placenta and kidney.

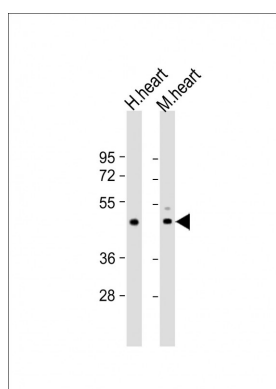
References

Saito T.,et al.Submitted (JAN-2000) to the EMBL/GenBank/DDBJ databases.
Wan D.,et al.Proc. Natl. Acad. Sci. U.S.A. 101:15724-15729(2004).
Muzny D.M.,et al.Nature 440:1194-1198(2006).
Mural R.J.,et al.Submitted (SEP-2005) to the EMBL/GenBank/DDBJ databases.
Yang H.,et al.Endocrinology 140:2859-2867(1999).

Images



Overlay histogram showing U-2OS cells stained with AP21977a (green line). The cells were fixed with 2% paraformaldehyde (10 min) and then permeabilized with 90% methanol for 10 min. The cells were then incubated in 2% bovine serum albumin to block non-specific protein-protein interactions followed by the antibody (AP21977a, 1:25 dilution) for 60 min at 37°C. The secondary antibody used was Goat-Anti-Rabbit IgG, DyLight® 488 Conjugated Highly Cross-Adsorbed(OH191631) at 1/200 dilution for 40 min at 37°C. Isotype control antibody (blue line) was rabbit IgG (1µg/1x10⁶ cells) used under the same conditions. Acquisition of >10, 000 events was performed.



All lanes : Anti-TPRA1 Antibody (N-Term) at 1:2000 dilution Lane 1: human heart lysate Lane 2: mouse heart lysate Lysates/proteins at 20 µg per lane. Secondary Goat Anti-Rabbit IgG, (H+L), Peroxidase conjugated at 1/10000 dilution. Predicted band size : 41 kDa Blocking/Dilution buffer: 5% NFDM/TBST.

Please note: All products are 'FOR RESEARCH USE ONLY. NOT FOR USE IN DIAGNOSTIC OR THERAPEUTIC PROCEDURES'.