

PHF6 Antibody (C-Term)

Purified Rabbit Polyclonal Antibody (Pab)

Catalog # AP21978b

Product Information

Application	WB, IF, E
Primary Accession	Q8IWS0
Other Accession	Q08DR0 , Q5R5Z2
Reactivity	Human, Mouse
Predicted	Bovine
Host	Rabbit
Clonality	polyclonal
Isotype	Rabbit IgG
Clone Names	RB54601
Calculated MW	41290

Additional Information

Gene ID	84295
Other Names	PHD finger protein 6, PHD-like zinc finger protein, PHF6, CENP-31, KIAA1823
Target/Specificity	This PHF6 antibody is generated from a rabbit immunized with a KLH conjugated synthetic peptide between 315-349 amino acids from human PHF6.
Dilution	WB~~1:2000 IF~~1:25 E~~Use at an assay dependent concentration.
Format	Purified polyclonal antibody supplied in PBS with 0.09% (W/V) sodium azide. This antibody is purified through a protein A column, followed by peptide affinity purification.
Storage	Maintain refrigerated at 2-8°C for up to 2 weeks. For long term storage store at -20°C in small aliquots to prevent freeze-thaw cycles.
Precautions	PHF6 Antibody (C-Term) is for research use only and not for use in diagnostic or therapeutic procedures.

Protein Information

Name	PHF6
Synonyms	CENP-31, KIAA1823
Function	Transcriptional regulator that associates with ribosomal RNA promoters and suppresses ribosomal RNA (rRNA) transcription.

Cellular Location	Nucleus. Nucleus, nucleolus. Chromosome, centromere, kinetochore. Note=Nuclear, it particularly localizes to the nucleolus
Tissue Location	Ubiquitously expressed.

Background

Transcriptional regulator that associates with ribosomal RNA promoters and suppresses ribosomal RNA (rRNA) transcription.

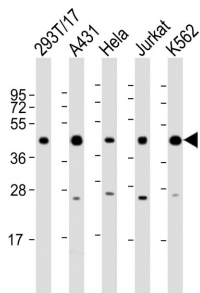
References

Lower K.M.,et al.Nat. Genet. 32:661-665(2002).
Nagase T.,et al.DNA Res. 8:85-95(2001).
Ota T.,et al.Nat. Genet. 36:40-45(2004).
Ross M.T.,et al.Nature 434:325-337(2005).
Mural R.J.,et al.Submitted (SEP-2005) to the EMBL/GenBank/DDBJ databases.

Images



Immunofluorescent analysis of 4% paraformaldehyde-fixed, 0.1% Triton X-100 permeabilized HeLa (human cervical epithelial adenocarcinoma cell line) cells labeling PHF6 with AP21978b at 1/25 dilution, followed by Dylight® 488-conjugated goat anti-rabbit IgG (NK179883) secondary antibody at 1/200 dilution (green). Immunofluorescence image showing nucleus staining on HeLa cell line. Cytoplasmic actin is detected with Dylight® 554 Phalloidin (PD18466410) at 1/100 dilution (red).



All lanes : Anti-PHF6 Antibody (C-Term) at 1:2000 dilution
Lane 1: 293T/17 whole cell lysate Lane 2: A431 whole cell lysate Lane 3: HeLa whole cell lysate Lane 4: Jurkat whole cell lysate Lane 5: K562 whole cell lysate Lysates/proteins at 20 µg per lane. Secondary Goat Anti-Rabbit IgG, (H+L), Peroxidase conjugated at 1/10000 dilution. Predicted band size : 41 kDa Blocking/Dilution buffer: 5% NFDM/TBST.

Please note: All products are 'FOR RESEARCH USE ONLY. NOT FOR USE IN DIAGNOSTIC OR THERAPEUTIC PROCEDURES'.