

AAAS Antibody (C-Term)

Purified Rabbit Polyclonal Antibody (Pab)

Catalog # AP21984b

Product Information

Application	WB, E
Primary Accession	Q9NRG9
Reactivity	Human
Host	Rabbit
Clonality	polyclonal
Isotype	Rabbit IgG
Clone Names	RB55272
Calculated MW	59574

Additional Information

Gene ID	8086
Other Names	Aladin, Adracalin, AAAS, ADRACALA
Target/Specificity	This AAAS antibody is generated from a rabbit immunized with a KLH conjugated synthetic peptide between 395-425 amino acids from human AAAS.
Dilution	WB~~1:2000 E~~Use at an assay dependent concentration.
Format	Purified polyclonal antibody supplied in PBS with 0.09% (W/V) sodium azide. This antibody is purified through a protein A column, followed by peptide affinity purification.
Storage	Maintain refrigerated at 2-8°C for up to 2 weeks. For long term storage store at -20°C in small aliquots to prevent freeze-thaw cycles.
Precautions	AAAS Antibody (C-Term) is for research use only and not for use in diagnostic or therapeutic procedures.

Protein Information

Name	AAAS
Synonyms	ADRACALA
Function	Plays a role in the normal development of the peripheral and central nervous system (PubMed: 11062474 , PubMed: 11159947 , PubMed: 16022285). Required for the correct localization of aurora kinase AURKA and the microtubule minus end-binding protein NUMA1 as well as a subset of AURKA

targets which ensures proper spindle formation and timely chromosome alignment (PubMed:[26246606](#)).

Cellular Location

Nucleus, nuclear pore complex. Cytoplasm, cytoskeleton, spindle pole. Nucleus envelope. Note=In metaphase cells localizes within the spindle with some accumulation around spindle poles, with the highest concentration between the centrosome and metaphase plate (PubMed:26246606). The localization to the spindle is microtubule- mediated (PubMed:26246606).

Tissue Location

Widely expressed (PubMed:11159947, PubMed:16022285). Particularly abundant in cerebellum, corpus callosum, adrenal gland, pituitary gland, gastrointestinal structures and fetal lung (PubMed:11159947).

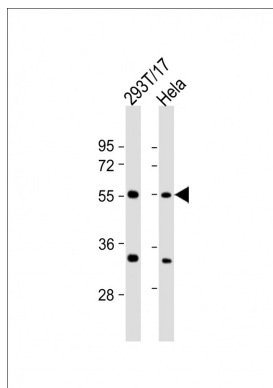
Background

Plays a role in the normal development of the peripheral and central nervous system.

References

Tullio-Pelet A.,et al.Nat. Genet. 26:332-335(2000).
Handschug K.,et al.Hum. Mol. Genet. 10:283-290(2001).
Li X.,et al.Mol. Biol. Rep. 32:127-131(2005).
Li Y.,et al.Submitted (JAN-2000) to the EMBL/GenBank/DDBJ databases.
Ota T.,et al.Nat. Genet. 36:40-45(2004).

Images



All lanes : Anti-AAAS Antibody (C-Term) at 1:2000 dilution
Lane 1: 293T/17 whole cell lysate Lane 2: HeLa whole cell lysate
Lysates/proteins at 20 µg per lane. Secondary Goat Anti-Rabbit IgG, (H+L), Peroxidase conjugated at 1/10000 dilution. Predicted band size : 60 kDa
Blocking/Dilution buffer: 5% NFDM/TBST.

Please note: All products are 'FOR RESEARCH USE ONLY. NOT FOR USE IN DIAGNOSTIC OR THERAPEUTIC PROCEDURES'.