

TPM3 Antibody (C-Term)

Purified Rabbit Polyclonal Antibody (Pab)

Catalog # AP21987b

Product Information

| | |
|--------------------------|-------------------------------------------------------------------------------------------------------------------------------------------------------------------------------------------------------------------------------------------------------------------------------------------------------------------------------------------------------------|
| Application | WB, E |
| Primary Accession | P06753 |
| Other Accession | Q5KR49 , P04268 , P58773 , P13104 , P09493 , P84335 , P58771 , P42639 , P58772 , P13105 , P04692 , Q01173 , Q5KR47 , A1XQV4 |
| Reactivity | Human |
| Predicted | Bovine, Chicken, Human, Mouse, Pig, Rat |
| Host | Rabbit |
| Clonality | polyclonal |
| Isotype | Rabbit IgG |
| Clone Names | RB54537 |
| Calculated MW | 32950 |

Additional Information

| | |
|---------------------------|------------------------------------------------------------------------------------------------------------------------------------------------------------------------------|
| Gene ID | 7170 |
| Other Names | Tropomyosin alpha-3 chain, Gamma-tropomyosin, Tropomyosin-3, Tropomyosin-5, hTM5, TPM3 |
| Target/Specificity | This TPM3 antibody is generated from a rabbit immunized with a KLH conjugated synthetic peptide between 245-276 amino acids from the human region of human TPM3. |
| Dilution | WB~~1:2000 E~~Use at an assay dependent concentration. |
| Format | Purified polyclonal antibody supplied in PBS with 0.09% (W/V) sodium azide. This antibody is purified through a protein A column, followed by peptide affinity purification. |
| Storage | Maintain refrigerated at 2-8°C for up to 2 weeks. For long term storage store at -20°C in small aliquots to prevent freeze-thaw cycles. |
| Precautions | TPM3 Antibody (C-Term) is for research use only and not for use in diagnostic or therapeutic procedures. |

Protein Information

| | |
|-----------------|--------------------------------------------------------------------------------------------------------------------------------------------------------------|
| Name | TPM3 |
| Function | Binds to actin filaments in muscle and non-muscle cells. Plays a central role, in association with the troponin complex, in the calcium dependent regulation |

of vertebrate striated muscle contraction. Smooth muscle contraction is regulated by interaction with caldesmon. In non-muscle cells is implicated in stabilizing cytoskeleton actin filaments.

Cellular Location

Cytoplasm, cytoskeleton.

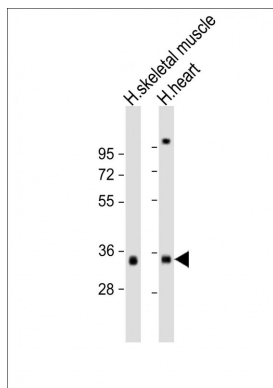
Background

Binds to actin filaments in muscle and non-muscle cells. Plays a central role, in association with the troponin complex, in the calcium dependent regulation of vertebrate striated muscle contraction. Smooth muscle contraction is regulated by interaction with caldesmon. In non-muscle cells is implicated in stabilizing cytoskeleton actin filaments.

References

Reinach F.C.,et al.Nature 322:648-650(1986).
McLeod A.R.,et al.Nucleic Acids Res. 14:8413-8426(1986).
Clayton L.,et al.J. Mol. Biol. 201:507-515(1988).
Lin J.J.-C.,et al.Submitted (JUL-2000) to the EMBL/GenBank/DDBJ databases.
Gregory S.G.,et al.Nature 441:315-321(2006).

Images



All lanes : Anti-TPM3 Antibody (C-Term) at 1:2000 dilution
Lane 1: human skeletal muscle lysate Lane 2: human heart lysate
Lysates/proteins at 20 µg per lane. Secondary Goat Anti-Rabbit IgG, (H+L), Peroxidase conjugated at 1/10000 dilution. Predicted band size : 33 kDa
Blocking/Dilution buffer: 5% NFDM/TBST.

Please note: All products are 'FOR RESEARCH USE ONLY. NOT FOR USE IN DIAGNOSTIC OR THERAPEUTIC PROCEDURES'.