

NAT16 Antibody (N-Term)

Purified Rabbit Polyclonal Antibody (Pab)

Catalog # AP21997a

Product Information

Application	WB, E
Primary Accession	Q8N8M0
Reactivity	Human
Host	Rabbit
Clonality	polyclonal
Isotype	Rabbit IgG
Clone Names	RB54654
Calculated MW	40521

Additional Information

Gene ID	375607
Other Names	Putative N-acetyltransferase 16, 2.3.1.-, NAT16, C7orf52
Target/Specificity	This NAT16 antibody is generated from a rabbit immunized with a KLH conjugated synthetic peptide between 12-46 amino acids from human NAT16.
Dilution	WB~~1:2000 E~~Use at an assay dependent concentration.
Format	Purified polyclonal antibody supplied in PBS with 0.09% (W/V) sodium azide. This antibody is purified through a protein A column, followed by peptide affinity purification.
Storage	Maintain refrigerated at 2-8°C for up to 2 weeks. For long term storage store at -20°C in small aliquots to prevent freeze-thaw cycles.
Precautions	NAT16 Antibody (N-Term) is for research use only and not for use in diagnostic or therapeutic procedures.

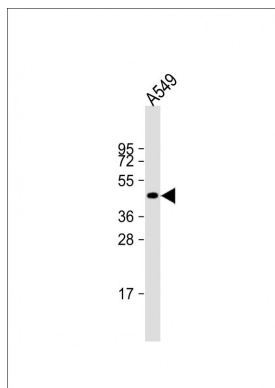
Protein Information

Name	NAT16
Synonyms	C7orf52
Function	Probable N-acetyltransferase. Shows only trace activity toward L-His and no N-acetyltransferase activity toward other amino acids. The physiological substrate of this enzyme is unknown.

References

Ota T.,et al.Nat. Genet. 36:40-45(2004).
Hillier L.W.,et al.Nature 424:157-164(2003).
Bechtel S.,et al.BMC Genomics 8:399-399(2007).

Images



Anti-NAT16 Antibody (N-Term) at 1:2000 dilution + A549 whole cell lysate Lysates/proteins at 20 µg per lane. Secondary Goat Anti-Rabbit IgG, (H+L), Peroxidase conjugated at 1/10000 dilution. Predicted band size : 41 kDa Blocking/Dilution buffer: 5% NFDM/TBST.

Please note: All products are 'FOR RESEARCH USE ONLY. NOT FOR USE IN DIAGNOSTIC OR THERAPEUTIC PROCEDURES'.