

PDE2A Antibody (C-Term)

Purified Rabbit Polyclonal Antibody (Pab)

Catalog # AP22001b

Product Information

Application	WB, E
Primary Accession	O00408
Other Accession	P14099 , Q92254 , Q01062
Reactivity	Human, Rat, Mouse
Predicted	Bovine, Mouse, Rat
Host	Rabbit
Clonality	polyclonal
Isotype	Rabbit IgG
Clone Names	RB54686
Calculated MW	105717

Additional Information

Gene ID	5138
Other Names	cGMP-dependent 3', 5'-cyclic phosphodiesterase, 3.1.4.17, Cyclic GMP-stimulated phosphodiesterase, CGS-PDE, cGSPDE, PDE2A
Target/Specificity	This PDE2A antibody is generated from a rabbit immunized with a KLH conjugated synthetic peptide between 780-810 amino acids of mouse PDE2A.
Dilution	WB~~1:2000 E~~Use at an assay dependent concentration.
Format	Purified polyclonal antibody supplied in PBS with 0.09% (W/V) sodium azide. This antibody is purified through a protein A column, followed by peptide affinity purification.
Storage	Maintain refrigerated at 2-8°C for up to 2 weeks. For long term storage store at -20°C in small aliquots to prevent freeze-thaw cycles.
Precautions	PDE2A Antibody (C-Term) is for research use only and not for use in diagnostic or therapeutic procedures.

Protein Information

Name	PDE2A (HGNC:8777)
Function	cGMP-activated cyclic nucleotide phosphodiesterase with a dual-specificity for the second messengers cAMP and cGMP, which are key regulators of many important physiological processes (PubMed: 15938621 , PubMed: 29392776 , PubMed: 9210593). Has a higher efficiency with cGMP

compared to cAMP (PubMed:[15938621](#)). Plays a role in cell growth and migration (PubMed:[24705027](#)).

Cellular Location

[Isoform PDE2A3]: Cell membrane; Lipid- anchor [Isoform PDE2A1]: Cytoplasm

Tissue Location

Widely expressed (PubMed:29392776, PubMed:9210593). Expressed in brain, with high expression observed in the corpus striatum (PubMed:29392776). Also expressed in heart, placenta, lung, skeletal muscle, kidney and pancreas (PubMed:29392776, PubMed:9210593)

Background

Cyclic nucleotide phosphodiesterase with a dual- specificity for the second messengers cAMP and cGMP, which are key regulators of many important physiological processes.

References

Rosman G.J.,et al.Gene 191:89-95(1997).

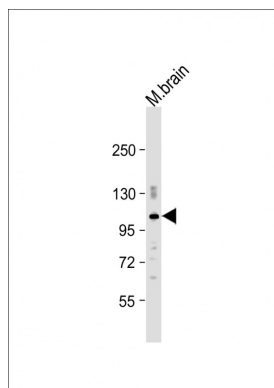
Bugaj-Gaweda B.,et al.Submitted (DEC-2003) to the EMBL/GenBank/DDBJ databases.

Ota T.,et al.Nat. Genet. 36:40-45(2004).

Taylor T.D.,et al.Nature 440:497-500(2006).

Russwurm C.,et al.J. Biol. Chem. 284:25782-25790(2009).

Images



Anti-PDE2A Antibody (C-Term) at 1:2000 dilution + mouse brain lysate Lysates/proteins at 20 µg per lane. Secondary Goat Anti-Rabbit IgG, (H+L), Peroxidase conjugated at 1/10000 dilution. Predicted band size : 106 kDa
Blocking/Dilution buffer: 5% NFD/MTBST.

Please note: All products are 'FOR RESEARCH USE ONLY. NOT FOR USE IN DIAGNOSTIC OR THERAPEUTIC PROCEDURES'.