

## PPAPDC1B Antibody (Center)

Purified Rabbit Polyclonal Antibody (Pab)

Catalog # AP22010c

### Product Information

---

Application	WB, E
Primary Accession	<a href="#">Q8NEB5</a>
Reactivity	Human, Mouse
Host	Rabbit
Clonality	polyclonal
Isotype	Rabbit IgG
Clone Names	RB54739
Calculated MW	29484

### Additional Information

---

Gene ID	84513
Other Names	Phosphatidate phosphatase PPAPDC1B, 3.1.3.4, Phosphatidic acid phosphatase type 2 domain-containing protein 1B, PPAPDC1B, DPPL1, HTPAP
Target/Specificity	This PPAPDC1B antibody is generated from a rabbit immunized with a KLH conjugated synthetic peptide between 114-146 amino acids from the Central region of human PPAPDC1B.
Dilution	WB~~1:2000 E~~Use at an assay dependent concentration.
Format	Purified polyclonal antibody supplied in PBS with 0.09% (W/V) sodium azide. This antibody is purified through a protein A column, followed by peptide affinity purification.
Storage	Maintain refrigerated at 2-8°C for up to 2 weeks. For long term storage store at -20°C in small aliquots to prevent freeze-thaw cycles.
Precautions	PPAPDC1B Antibody (Center) is for research use only and not for use in diagnostic or therapeutic procedures.

### Protein Information

---

Name	PLPP5 ( <a href="#">HGNC:25026</a> )
Function	Magnesium-independent phospholipid phosphatase with broad substrate specificity (PubMed: <a href="#">17590538</a> ). Preferentially catalyzes the conversion of diacylglycerol pyrophosphate into phosphatidate but can also act on phosphatidate and lysophosphatidate (PubMed: <a href="#">17590538</a> ). Phospholipid phosphatases are involved in both the synthesis of lipids and the generation

or degradation of lipid-signaling molecules (PubMed:[17590538](#)).

#### Cellular Location

Cell membrane; Multi-pass membrane protein  
{ECO:0000250|UniProtKB:Q3UMZ3}

#### Tissue Location

Ubiquitous..

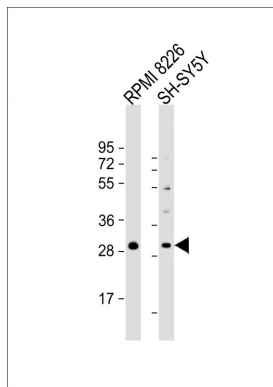
## Background

Displays magnesium-independent phosphatidate phosphatase activity in vitro. Catalyzes the conversion of phosphatidic acid to diacylglycerol. May be a metastatic suppressor for hepatocellular carcinoma.

## References

Takeuchi M.,et al.Gene 399:174-180(2007).  
Nusbaum C.,et al.Nature 439:331-335(2006).  
Li Y.,et al.Submitted (DEC-1999) to the EMBL/GenBank/DDBJ databases.  
Wu X.,et al.Oncogene 25:1832-1840(2006).

## Images



All lanes : Anti-PPAPDC1B Antibody (Center) at 1:2000 dilution  
Lane 1: RPMI 8226 whole cell lysate  
Lane 2: SH-SY5Y whole cell lysate  
Lysates/proteins at 20 µg per lane.  
Secondary Goat Anti-Rabbit IgG, (H+L), Peroxidase conjugated at 1/10000 dilution.  
Predicted band size : 29 kDa  
Blocking/Dilution buffer: 5% NFDM/TBST.

Please note: All products are 'FOR RESEARCH USE ONLY. NOT FOR USE IN DIAGNOSTIC OR THERAPEUTIC PROCEDURES'.