

MAN1A2 Antibody (Center)

Purified Rabbit Polyclonal Antibody (Pab)

Catalog # AP22014c

Product Information

Application	WB, E
Primary Accession	O60476
Reactivity	Human, Mouse
Host	Rabbit
Clonality	polyclonal
Isotype	Rabbit IgG
Clone Names	RB55006
Calculated MW	73004

Additional Information

Gene ID	10905
Other Names	Mannosyl-oligosaccharide 1, 2-alpha-mannosidase IB, 3.2.1.113, Mannosidase alpha class 1A member 2, Processing alpha-1, 2-mannosidase IB, Alpha-1, 2-mannosidase IB, MAN1A2, MAN1B
Target/Specificity	This MAN1A2 antibody is generated from a rabbit immunized with a KLH conjugated synthetic peptide between 342-373 amino acids from the Central region of human MAN1A2.
Dilution	WB~~1:2000 E~~Use at an assay dependent concentration.
Format	Purified polyclonal antibody supplied in PBS with 0.09% (W/V) sodium azide. This antibody is purified through a protein A column, followed by peptide affinity purification.
Storage	Maintain refrigerated at 2-8°C for up to 2 weeks. For long term storage store at -20°C in small aliquots to prevent freeze-thaw cycles.
Precautions	MAN1A2 Antibody (Center) is for research use only and not for use in diagnostic or therapeutic procedures.

Protein Information

Name	MAN1A2
Synonyms	MAN1B
Function	Involved in the maturation of Asn-linked oligosaccharides. Progressively trim alpha-1,2-linked mannose residues from Man(9)GlcNAc(2) to produce

Man(5)GlcNAc(2).

Cellular Location

Golgi apparatus membrane; Single-pass type II membrane protein

Tissue Location

Highest levels of expression in placenta and testis

Background

Involved in the maturation of Asn-linked oligosaccharides. Progressively trim alpha-1,2-linked mannose residues from Man(9)GlcNAc(2) to produce Man(5)GlcNAc(2).

References

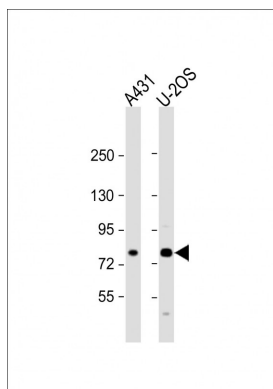
Tremblay L.O.,et al.Glycobiology 8:585-595(1998).

Gregory S.G.,et al.Nature 441:315-321(2006).

Bienvenut W.V.,et al.Mol. Cell. Proteomics 11:M111.015131-M111.015131(2012).

Van Damme P.,et al.Proc. Natl. Acad. Sci. U.S.A. 109:12449-12454(2012).

Images



All lanes : Anti-MAN1A2 Antibody (Center) at 1:2000 dilution Lane 1: A431 whole cell lysate Lane 2: U-2OS whole cell lysate Lysates/proteins at 20 µg per lane. Secondary Goat Anti-Rabbit IgG, (H+L), Peroxidase conjugated at 1/10000 dilution. Predicted band size : 73 kDa Blocking/Dilution buffer: 5% NFDM/TBST.

Please note: All products are 'FOR RESEARCH USE ONLY. NOT FOR USE IN DIAGNOSTIC OR THERAPEUTIC PROCEDURES'.