

CERS2 Antibody (Center)

Purified Rabbit Polyclonal Antibody (Pab)

Catalog # AP22022c

Product Information

Application	WB, E
Primary Accession	Q96G23
Reactivity	Human, Mouse
Host	Rabbit
Clonality	polyclonal
Isotype	Rabbit IgG
Clone Names	RB55088
Calculated MW	44876

Additional Information

Gene ID	29956
Other Names	Ceramide synthase 2, CerS2, LAG1 longevity assurance homolog 2, SP260, Tumor metastasis-suppressor gene 1 protein, CERS2, LASS2, TMSG1
Target/Specificity	This CERS2 antibody is generated from a rabbit immunized with a KLH conjugated synthetic peptide between 137-168 amino acids from the Central region of human CERS2.
Dilution	WB~~1:2000 E~~Use at an assay dependent concentration.
Format	Purified polyclonal antibody supplied in PBS with 0.09% (W/V) sodium azide. This antibody is purified through a protein A column, followed by peptide affinity purification.
Storage	Maintain refrigerated at 2-8°C for up to 2 weeks. For long term storage store at -20°C in small aliquots to prevent freeze-thaw cycles.
Precautions	CERS2 Antibody (Center) is for research use only and not for use in diagnostic or therapeutic procedures.

Protein Information

Name	CERS2 {ECO:0000303 PubMed:17977534, ECO:0000312 HGNC:HGNC:14076}
Function	Ceramide synthase that catalyzes the transfer of the acyl chain from acyl-CoA to a sphingoid base, with high selectivity toward very-long-chain fatty acyl-CoA (chain length C22-C27) (PubMed: 17977534 , PubMed: 18165233 , PubMed: 18541923 , PubMed: 19728861 , PubMed: 20937905 , PubMed: 22144673 , PubMed: 22661289 , PubMed: 26887952 ,

PubMed:[29632068](#)). N- acylates sphinganine and sphingosine bases to form dihydroceramides and ceramides in de novo synthesis and salvage pathways, respectively (By similarity) (PubMed:[17977534](#), PubMed:[18165233](#), PubMed:[18541923](#), PubMed:[19728861](#), PubMed:[20937905](#), PubMed:[22144673](#), PubMed:[22661289](#), PubMed:[26887952](#), PubMed:[29632068](#)). Plays a non-redundant role in the synthesis of ceramides with very-long-chain fatty acids in kidney, liver and brain. Regulates the abundance of myelin-specific sphingolipids galactosylceramide and sulfatide that affects myelin sheath architecture and motor neuron functions (By similarity).

Cellular Location Endoplasmic reticulum membrane; Multi-pass membrane protein

Tissue Location Expressed in kidney, liver, brain, heart, placenta and lung.

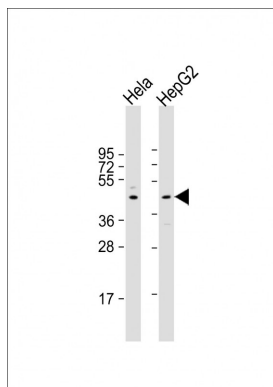
Background

Suppresses the growth of cancer cells. May be involved in sphingolipid synthesis.

References

Pan H.,et al.Genomics 77:58-64(2001).
Qin W.-X.,et al.Submitted (MAY-2002) to the EMBL/GenBank/DDBJ databases.
Xingfeng C.,et al.Submitted (MAR-2002) to the EMBL/GenBank/DDBJ databases.
Gregory S.G.,et al.Nature 441:315-321(2006).
Mural R.J.,et al.Submitted (SEP-2005) to the EMBL/GenBank/DDBJ databases.

Images



All lanes : Anti-CERS2 Antibody (Center) at 1:2000 dilution
Lane 1: HeLa whole cell lysate Lane 2: HepG2 whole cell lysate
Lysates/proteins at 20 µg per lane. Secondary Goat Anti-Rabbit IgG, (H+L), Peroxidase conjugated at 1/10000 dilution. Predicted band size : 45 kDa
Blocking/Dilution buffer: 5% NFD/MTBST.

Please note: All products are 'FOR RESEARCH USE ONLY. NOT FOR USE IN DIAGNOSTIC OR THERAPEUTIC PROCEDURES'.