

LRIG3 Antibody (N-Term)

Purified Rabbit Polyclonal Antibody (Pab)

Catalog # AP22023a

Product Information

Application	WB, E
Primary Accession	Q6UXM1
Reactivity	Human
Host	Rabbit
Clonality	polyclonal
Isotype	Rabbit IgG
Clone Names	RB54882
Calculated MW	123434

Additional Information

Gene ID	121227
Other Names	Leucine-rich repeats and immunoglobulin-like domains protein 3, LIG-3, LRIG3, LIG3
Target/Specificity	This LRIG3 antibody is generated from a rabbit immunized with a KLH conjugated synthetic peptide between 23-54 amino acids from human LRIG3.
Dilution	WB~~1:2000 E~~Use at an assay dependent concentration.
Format	Purified polyclonal antibody supplied in PBS with 0.09% (W/V) sodium azide. This antibody is purified through a protein A column, followed by peptide affinity purification.
Storage	Maintain refrigerated at 2-8°C for up to 2 weeks. For long term storage store at -20°C in small aliquots to prevent freeze-thaw cycles.
Precautions	LRIG3 Antibody (N-Term) is for research use only and not for use in diagnostic or therapeutic procedures.

Protein Information

Name	LRIG3
Synonyms	LIG3
Function	May play a role in craniofacial and inner ear morphogenesis during embryonic development. May act within the otic vesicle epithelium to control formation of the lateral semicircular canal in the inner ear, possibly by restricting the expression of NTN1 (By similarity).

Cellular Location	Cell membrane; Single-pass type I membrane protein. Cytoplasmic vesicle membrane; Single-pass type I membrane protein Note=Detected in cytoplasmic vesicles when coexpressed with ERBB4
Tissue Location	Widely expressed..

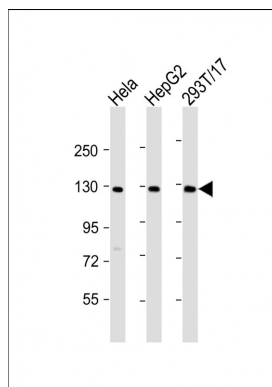
Background

May play a role in craniofacial and inner ear morphogenesis during embryonic development. May act within the otic vesicle epithelium to control formation of the lateral semicircular canal in the inner ear, possibly by restricting the expression of NTN1 (By similarity).

References

Guo D.,et al.Genomics 84:157-165(2004).
 Clark H.F.,et al.Genome Res. 13:2265-2270(2003).
 Ota T.,et al.Nat. Genet. 36:40-45(2004).

Images



All lanes : Anti-LRIG3 Antibody (N-Term) at 1:2000 dilution
 Lane 1: HeLa whole cell lysate Lane 2: HepG2 whole cell lysate Lane 3: 293T/17 whole cell lysate Lysates/proteins at 20 µg per lane. Secondary Goat Anti-Rabbit IgG, (H+L), Peroxidase conjugated at 1/10000 dilution. Predicted band size : 123 kDa Blocking/Dilution buffer: 5% NFDM/TBST.

Please note: All products are 'FOR RESEARCH USE ONLY. NOT FOR USE IN DIAGNOSTIC OR THERAPEUTIC PROCEDURES'.