

CCT8L2 Antibody (N-Term)

Purified Rabbit Polyclonal Antibody (Pab)

Catalog # AP22024a

Product Information

Application	WB, FC, E
Primary Accession	Q96SF2
Other Accession	A6NM43
Reactivity	Human
Predicted	Human
Host	Rabbit
Clonality	polyclonal
Isotype	Rabbit IgG
Clone Names	RB54710
Calculated MW	59388

Additional Information

Gene ID	150160
Other Names	Putative T-complex protein 1 subunit theta-like 2, CCT8L2, CESK1
Target/Specificity	This CCT8L2 antibody is generated from a rabbit immunized with a KLH conjugated synthetic peptide between 92-124 amino acids from human CCT8L2.
Dilution	WB~~1:2000 FC~~1:25 E~~Use at an assay dependent concentration.
Format	Purified polyclonal antibody supplied in PBS with 0.09% (W/V) sodium azide. This antibody is purified through a protein A column, followed by peptide affinity purification.
Storage	Maintain refrigerated at 2-8°C for up to 2 weeks. For long term storage store at -20°C in small aliquots to prevent freeze-thaw cycles.
Precautions	CCT8L2 Antibody (N-Term) is for research use only and not for use in diagnostic or therapeutic procedures.

Protein Information

Name	CCT8L2
Synonyms	CESK1
Function	Possible molecular chaperone; assists the folding of proteins upon ATP hydrolysis.

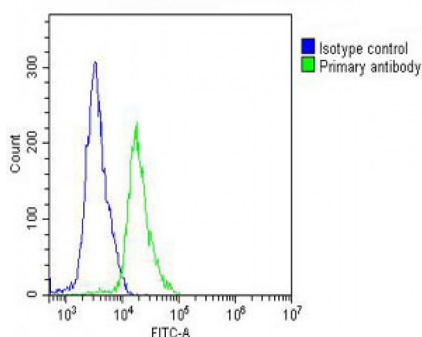
Background

Possible molecular chaperone; assists the folding of proteins upon ATP hydrolysis.

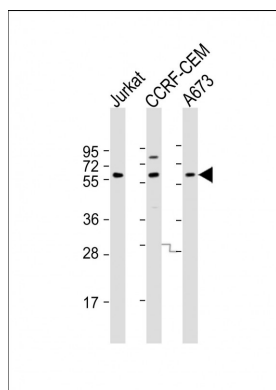
References

Riazi M.A.,et al.Genomics 62:90-94(1999).
Collins J.E.,et al.Genome Biol. 5:R84.1-R84.11(2004).
Dunham I.,et al.Nature 402:489-495(1999).
Mural R.J.,et al.Submitted (JUL-2005) to the EMBL/GenBank/DDBJ databases.

Images



Overlay histogram showing Jurkat cells stained with AP22024a (green line). The cells were fixed with 2% paraformaldehyde (10 min) and then permeabilized with 90% methanol for 10 min. The cells were then incubated in 2% bovine serum albumin to block non-specific protein-protein interactions followed by the antibody (AP22024a, 1:25 dilution) for 60 min at 37°C. The secondary antibody used was Goat-Anti-Rabbit IgG, DyLight® 488 Conjugated Highly Cross-Adsorbed(OH191631) at 1/200 dilution for 40 min at 37°C. Isotype control antibody (blue line) was rabbit IgG (1 µg/1x10⁶ cells) used under the same conditions. Acquisition of >10, 000 events was performed.



All lanes : Anti-CCT8L2 Antibody (N-Term) at 1:2000 dilution Lane 1: Jurkat whole cell lysate Lane 2: CCRF-CEM whole cell lysate Lane 3: A673 whole cell lysate Lysates/proteins at 20 µg per lane. Secondary Goat Anti-Rabbit IgG, (H+L), Peroxidase conjugated at 1/10000 dilution. Predicted band size : 59 kDa Blocking/Dilution buffer: 5% NFDM/TBST.

Please note: All products are 'FOR RESEARCH USE ONLY. NOT FOR USE IN DIAGNOSTIC OR THERAPEUTIC PROCEDURES'.