

RPL4 Antibody (N-Term)

Purified Rabbit Polyclonal Antibody (Pab)

Catalog # AP22030a

Product Information

Application	WB, FC, IF, E
Primary Accession	P36578
Other Accession	Q58DW0 , Q28346 , Q9D8E6 , Q5RCR3
Reactivity	Human, Mouse
Predicted	Bovine, Mouse
Host	Rabbit
Clonality	polyclonal
Isotype	Rabbit IgG
Clone Names	RB55331
Calculated MW	47697

Additional Information

Gene ID	6124
Other Names	60S ribosomal protein L4, 60S ribosomal protein L1, RPL4, RPL1
Target/Specificity	This RPL4 antibody is generated from a rabbit immunized with a KLH conjugated synthetic peptide between 119-149 amino acids from human RPL4.
Dilution	WB~~1:2000 FC~~1:25 IF~~1:25 E~~Use at an assay dependent concentration.
Format	Purified polyclonal antibody supplied in PBS with 0.09% (W/V) sodium azide. This antibody is purified through a protein A column, followed by peptide affinity purification.
Storage	Maintain refrigerated at 2-8°C for up to 2 weeks. For long term storage store at -20°C in small aliquots to prevent freeze-thaw cycles.
Precautions	RPL4 Antibody (N-Term) is for research use only and not for use in diagnostic or therapeutic procedures.

Protein Information

Name	RPL4
Synonyms	RPL1
Function	Component of the large ribosomal subunit. The ribosome is a large ribonucleoprotein complex responsible for the synthesis of proteins in the

cell.

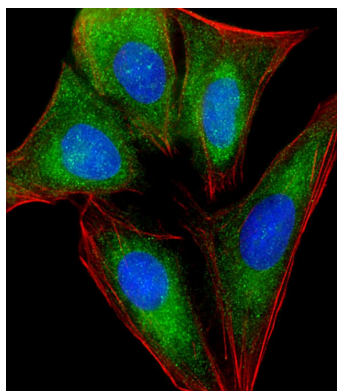
Cellular Location

Cytoplasm.

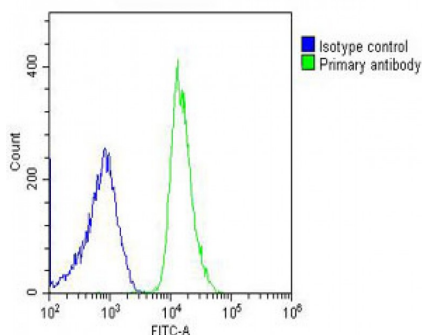
References

Bagni C.,et al.Biochim. Biophys. Acta 1216:475-478(1993).
Bagni C.,et al.Submitted (JAN-2004) to the EMBL/GenBank/DDBJ databases.
Kato S.,et al.Submitted (NOV-1993) to the EMBL/GenBank/DDBJ databases.
Yoshihama M.,et al.Genome Res. 12:379-390(2002).
Ota T.,et al.Nat. Genet. 36:40-45(2004).

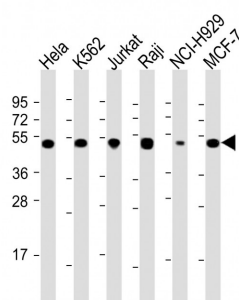
Images



Immunofluorescent analysis of 4% paraformaldehyde-fixed, 0.1% Triton X-100 permeabilized U-2 OS (human osteosarcoma cell line) cells labeling RPL4 with AP22030a at 1/25 dilution, followed by Dylight® 488-conjugated goat anti-rabbit IgG (NK179883) secondary antibody at 1/200 dilution (green). Immunofluorescence image showing cytoplasm and nucleus staining on U-2 OS cell line. Cytoplasmic actin is detected with Dylight® 554 Phalloidin (PD18466410) at 1/100 dilution (red).The nuclear counter stain is DAPI (blue).



Overlay histogram showing U-2OS cells stained with AP22030a (green line). The cells were fixed with 2% paraformaldehyde (10 min) and then permeabilized with 90% methanol for 10 min. The cells were then incubated in 2% bovine serum albumin to block non-specific protein-protein interactions followed by the antibody (AP22030a, 1:25 dilution) for 60 min at 37°C. The secondary antibody used was Goat-Anti-Rabbit IgG, DyLight® 488 Conjugated Highly Cross-Adsorbed(OH191631) at 1/200 dilution for 40 min at 37°C. Isotype control antibody (blue line) was rabbit IgG (1µg/1x10⁶ cells) used under the same conditions. Acquisition of >10, 000 events was performed.



All lanes : Anti-RPL4 Antibody (N-Term) at 1:2000 dilution
Lane 1: Hela whole cell lysate Lane 2: K562 whole cell lysate Lane 3: Jurkat whole cell lysate Lane 4: Raji whole cell lysate Lane 5: NCI-H929 whole cell lysate Lane 6: MCF-7 whole cell lysate Lysates/proteins at 20 µg per lane. Secondary Goat Anti-Rabbit IgG, (H+L), Peroxidase conjugated at 1/10000 dilution. Predicted band size : 48 kDa Blocking/Dilution buffer: 5% NFDM/TBST.