

PLA2G4F Antibody (Center)

Purified Rabbit Polyclonal Antibody (Pab)

Catalog # AP22037c

Product Information

Application	WB, E
Primary Accession	Q68DD2
Reactivity	Human, Mouse
Host	Rabbit
Clonality	polyclonal
Isotype	Rabbit IgG
Clone Names	RB55091
Calculated MW	95082

Additional Information

Gene ID	255189
Other Names	Cytosolic phospholipase A2 zeta, cPLA2-zeta, 3.1.1.4, Phospholipase A2 group IVF, PLA2G4F
Target/Specificity	This PLA2G4F antibody is generated from a rabbit immunized with a KLH conjugated synthetic peptide between 289-331 amino acids from the Central region of human PLA2G4F.
Dilution	WB~~1:2000 E~~Use at an assay dependent concentration.
Format	Purified polyclonal antibody supplied in PBS with 0.09% (W/V) sodium azide. This antibody is purified through a protein A column, followed by peptide affinity purification.
Storage	Maintain refrigerated at 2-8°C for up to 2 weeks. For long term storage store at -20°C in small aliquots to prevent freeze-thaw cycles.
Precautions	PLA2G4F Antibody (Center) is for research use only and not for use in diagnostic or therapeutic procedures.

Protein Information

Name	PLA2G4F
Function	Has calcium-dependent phospholipase and lysophospholipase activities with a potential role in membrane lipid remodeling and biosynthesis of lipid mediators (PubMed: 29158256). Preferentially hydrolyzes the ester bond of the fatty acyl group attached at sn-2 position of phospholipids (phospholipase A2 activity) (PubMed: 29158256). Selectively hydrolyzes sn-2 arachidonoyl

group from membrane phospholipids, providing the precursor for eicosanoid biosynthesis (PubMed:[29158256](#)). In myocardial mitochondria, plays a major role in arachidonate release that is metabolically channeled to the formation of cardioprotective eicosanoids, epoxyeicosatrienoates (EETs) (PubMed:[29158256](#)).

Cellular Location Cytoplasm, cytosol {ECO:0000250|UniProtKB:Q50L41}. Cell membrane {ECO:0000250|UniProtKB:Q50L41}; Peripheral membrane protein. Mitochondrion

Tissue Location Expressed in myocardium (at protein level).

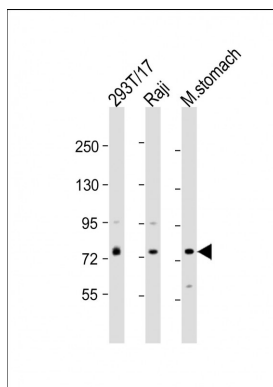
Background

Calcium-dependent phospholipase A2 that selectively hydrolyzes glycerophospholipids in the sn-2 position. Has higher enzyme activity for phosphatidylethanolamine than phosphatidylcholine (By similarity).

References

Ota T.,et al.Nat. Genet. 36:40-45(2004).
Zody M.C.,et al.Nature 440:671-675(2006).
Bechtel S.,et al.BMC Genomics 8:399-399(2007).

Images



All lanes : Anti-PLA2G4F Antibody (Center) at 1:2000 dilution Lane 1: 293T/17 whole cell lysate Lane 2: Raji whole cell lysate Lane 3: mouse stomach lysate Lysates/proteins at 20 µg per lane. Secondary Goat Anti-Rabbit IgG, (H+L), Peroxidase conjugated at 1/10000 dilution. Predicted band size : 95 kDa Blocking/Dilution buffer: 5% NFDM/TBST.

Please note: All products are 'FOR RESEARCH USE ONLY. NOT FOR USE IN DIAGNOSTIC OR THERAPEUTIC PROCEDURES'.