

RPS17 Antibody (Center)

Purified Rabbit Polyclonal Antibody (Pab)

Catalog # AP22039c

Product Information

Application	WB, E
Primary Accession	P08708
Other Accession	P0CW22 , A5PK63 , P63273 , P08636 , Q7ZUB2 , P63274 , P63275 , Q90YQ6 , P63276 , Q6QAP7 , P04644 , Q962R2
Reactivity	Human, Rat, Mouse
Predicted	Bovine, Chicken, Human, Mouse, Pig, Rat
Host	Rabbit
Clonality	polyclonal
Isotype	Rabbit IgG
Clone Names	RB55333
Calculated MW	15550

Additional Information

Gene ID	6218
Other Names	40S ribosomal protein S17, RPS17
Target/Specificity	This RPS17 antibody is generated from a rabbit immunized with a KLH conjugated synthetic peptide between 55-87 amino acids from the Central region of human RPS17.
Dilution	WB~~1:2000 E~~Use at an assay dependent concentration.
Format	Purified polyclonal antibody supplied in PBS with 0.09% (W/V) sodium azide. This antibody is purified through a protein A column, followed by peptide affinity purification.
Storage	Maintain refrigerated at 2-8°C for up to 2 weeks. For long term storage store at -20°C in small aliquots to prevent freeze-thaw cycles.
Precautions	RPS17 Antibody (Center) is for research use only and not for use in diagnostic or therapeutic procedures.

Protein Information

Name	RPS17 (HGNC:10397)
Function	Component of the small ribosomal subunit (PubMed: 23636399). The ribosome is a large ribonucleoprotein complex responsible for the synthesis of proteins in the cell (PubMed: 23636399). Part of the small subunit (SSU)

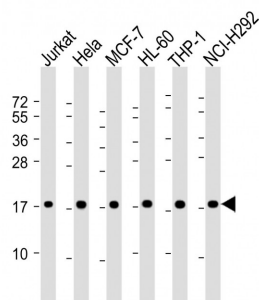
processome, first precursor of the small eukaryotic ribosomal subunit. During the assembly of the SSU processome in the nucleolus, many ribosome biogenesis factors, an RNA chaperone and ribosomal proteins associate with the nascent pre-rRNA and work in concert to generate RNA folding, modifications, rearrangements and cleavage as well as targeted degradation of pre-ribosomal RNA by the RNA exosome (PubMed:[34516797](#)).

Cellular Location Cytoplasm. Nucleus, nucleolus

References

Chen I.-T.,et al.Proc. Natl. Acad. Sci. U.S.A. 83:6907-6911(1986).
 Chen I.-T.,et al.Gene 70:107-116(1988).
 Ota T.,et al.Nat. Genet. 36:40-45(2004).
 Zody M.C.,et al.Nature 440:671-675(2006).
 Mural R.J.,et al.Submitted (JUL-2005) to the EMBL/GenBank/DDBJ databases.

Images



All lanes : Anti-RPS17 Antibody (Center) at 1:2000 dilution
 Lane 1: Jurkat whole cell lysate Lane 2: HeLa whole cell lysate Lane 3: MCF-7 whole cell lysate Lane 4: HL-60 whole cell lysate Lane 5: THP-1 whole cell lysate Lane 6: NCI-H292 whole cell lysate Lysates/proteins at 20 µg per lane. Secondary Goat Anti-Rabbit IgG, (H+L), Peroxidase conjugated at 1/10000 dilution. Predicted band size : 16 kDa Blocking/Dilution buffer: 5% NFDM/TBST.

Please note: All products are 'FOR RESEARCH USE ONLY. NOT FOR USE IN DIAGNOSTIC OR THERAPEUTIC PROCEDURES'.